

Installation Instructions for 900 Series Leverset

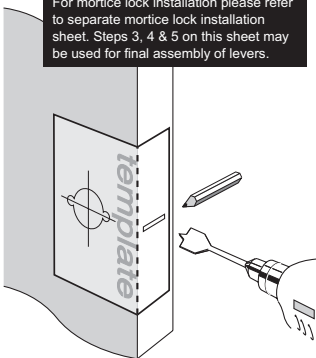
for passage applications for new doors

Step 1.

- Fold template where indicated.
 - Position template on door edge at desired latch height.
 - Firmly hold template and mark latch height on door edge and centre points of handle fixing holes on door face at required backset (refer template).
 - Measure door thickness and mark centre.
 - Drill 25mm (1") latch hole through door edge.
- Note:** it is important to drill this hole squarely.
- Drill two 10mm (3/8") holes and one 35mm (1 3/8") hole through door face at required backset.
- Ensure 10mm holes are drilled first.**

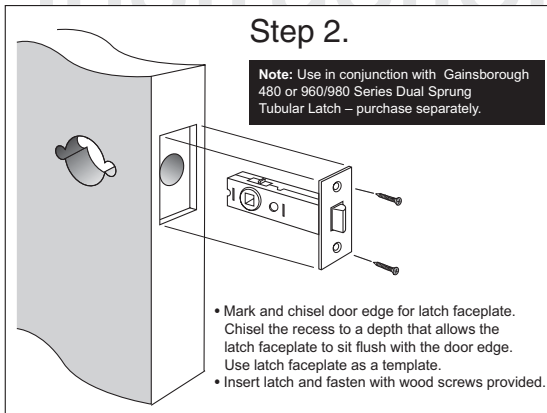
Important Note

For mortice lock installation please refer to separate mortice lock installation sheet. Steps 3, 4 & 5 on this sheet may be used for final assembly of levers.



Step 2.

Note: Use in conjunction with Gainsborough 480 or 960/980 Series Dual Spring Tubular Latch – purchase separately.



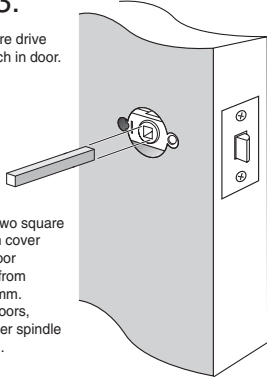
- Mark and chisel door edge for latch faceplate. Chisel the recess to a depth that allows the latch faceplate to sit flush with the door edge. Use latch faceplate as a template.
- Insert latch and fasten with wood screws provided.

Step 3.

- Insert square drive through latch in door.

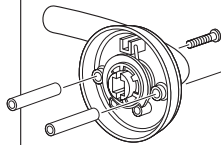
Note:

Select from two square drives, which cover a range of door thicknesses from 32mm to 45mm. For thicker doors, a special order spindle may be used.



Step 4.

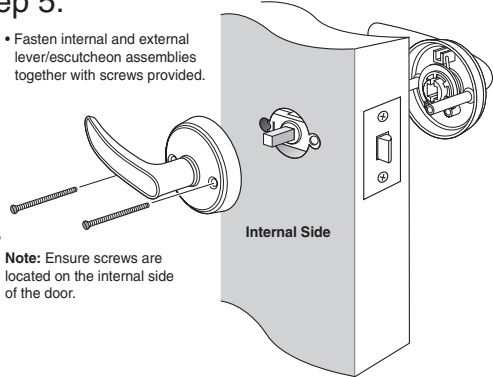
- Insert blind screws and brass posts to the lever/escutcheon assembly chosen to fit the external door face.



Step 5.

- Fasten internal and external lever/escutcheon assemblies together with screws provided.

Note: Ensure screws are located on the internal side of the door.



NOTE: Carefully follow these instructions when installing. Screws to be tightened to a recommended 2.5Nm torque.



FOLD HERE

Mark centre-line of latch hole

Mark centre-line of latch hole

Fit here on door edge

Fit here on door edge

10mm (3/8") hole (drill first)

35mm (1 3/8")** hole (drill second)

BACKSET 60mm (2 3/8")

BACKSET 70mm (2 3/4")

10mm (3/8") hole (drill first)



Gainsborough Hardware Industries Limited
 ABN 25 004 792 269
 190 Whitehorse Road, Blackburn, Victoria 3130
www.gainsboroughhardware.com.au

PAIT 056

**If using leverset with a '9009' Privacy Adaptor, it is recommended to drill a 54mm cross bore hole. The privacy adaptor will fit a 50mm cross bore hole, providing the hole has been drilled to the correct diameter and at the precise backset from door edge (see reverse side).

Installation template for passage applications

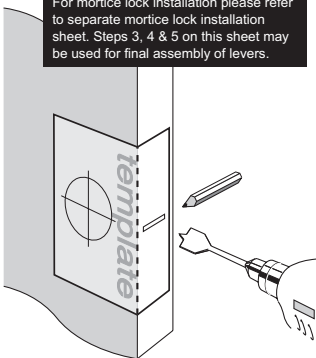
Installation Instructions for 900 Series Leverset

for doors with pre-drilled holes or where installation of privacy adaptor is required

Step 1.

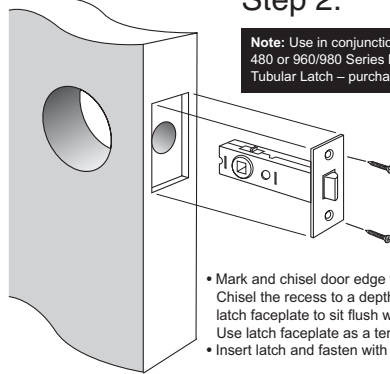
- Fold template where indicated.
- Position template on door edge at desired latch height.
- Firmly hold template and mark latch height on door edge and centre hole on door face at required backset (refer template).
- Measure door thickness and mark centre.
- Drill 25mm (1") latch hole through door edge.
- Note:** it is important to drill this hole squarely.
- At required backset drill pilot hole (suggested size 3mm (1/8")). Then enlarge hole to 50mm (2") or 54mm (2 1/8") in diameter as required, drilling from both sides of the door.

Important Note
For mortice lock installation please refer to separate mortice lock installation sheet. Steps 3, 4 & 5 on this sheet may be used for final assembly of levers.



Step 2.

Note: Use in conjunction with Gainsborough 480 or 960/980 Series Dual Sprung Tubular Latch – purchase separately.

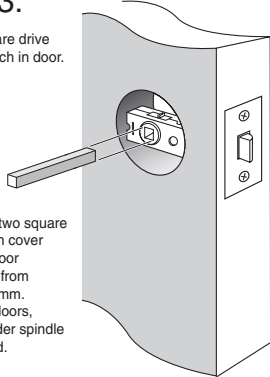


- Mark and chisel door edge for latch faceplate. Chisel the recess to a depth that allows the latch faceplate to sit flush with the door edge. Use latch faceplate as a template.
- Insert latch and fasten with wood screws provided.

Step 3.

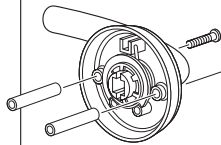
- Insert square drive through latch in door.

Note:
Select from two square drives, which cover a range of door thicknesses from 32mm to 45mm. For thicker doors, a special order spindle may be used.



Step 4.

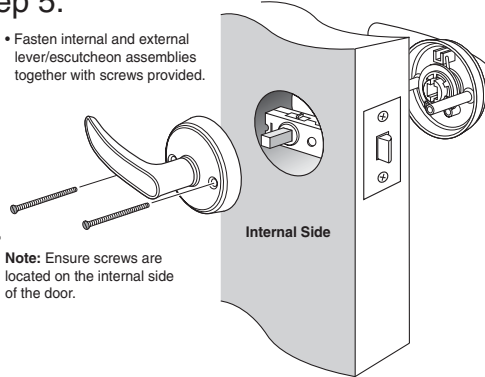
- Insert blind screws and brass posts to the lever/escutcheon assembly chosen to fit the external door face.



Step 5.

- Fasten internal and external lever/escutcheon assemblies together with screws provided.

Note: Ensure screws are located on the internal side of the door.



NOTE: Carefully follow these instructions when installing. Screws to be tightened to a recommended 2.5Nm torque.



FOLD HERE

Mark centre-line of latch hole

Mark centre-line of latch hole

Fit here on door edge

54mm (2 1/8") hole
50mm (2") hole

BACKSET 60mm (2 3/8")

BACKSET 70mm (2 3/4")

Fit here on door edge



Gainsborough Hardware Industries Limited
ABN 25 004 792 269
190 Whitehorse Road, Blackburn, Victoria 3130
www.gainsboroughhardware.com.au

PAIT 056

**If using leverset with a '9009' Privacy Adaptor, it is recommended to drill a 54mm cross bore hole. The privacy adaptor will fit a 50mm cross bore hole, providing the hole has been drilled to the correct diameter and at the precise backset from door edge.

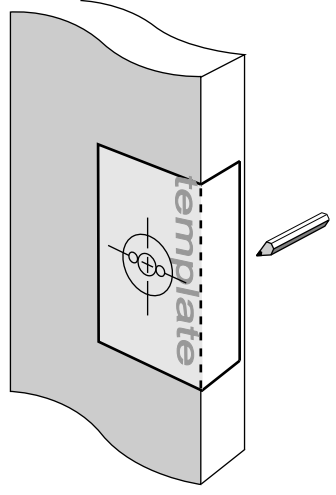
Installation template for doors with pre-bored holes or where installation of a privacy adaptor is required

installation instructions

note: these instructions are for Gainsborough Decorator 920 series dummy door handles

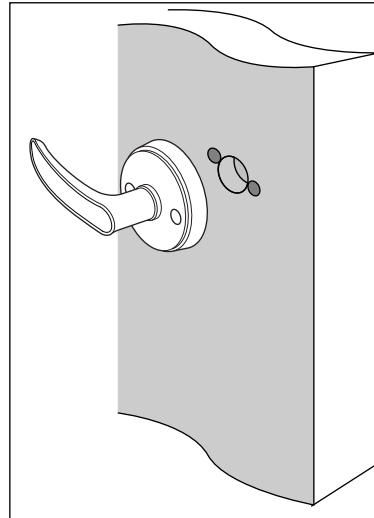
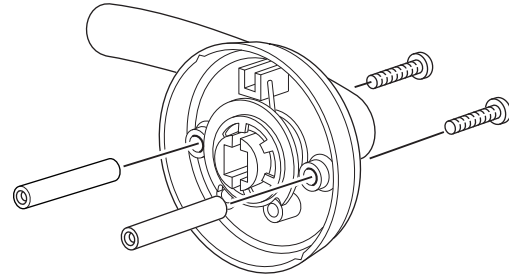
Step 1.

- I fold template where indicated.
- I position template on door edge at desired latch height.
- I firmly hold template and mark hole centre at required backset.
- I drill two 6mm (1/4") holes right through the door and one 19-35mm (3/4"-1 1/2") and 6mm (1/4") deep, on door face at required backset as marked on template



Step 2.

- I install blind screws and brass posts to the lever/escutcheon assembly.



Step 3.

- I assemble lever/escutcheon to door and fasten with screws and cup washers provided.

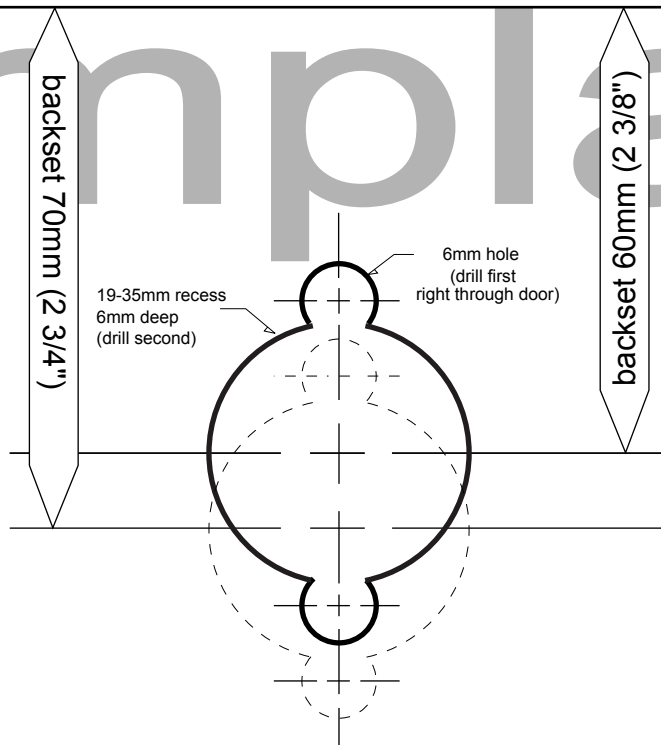
NOTE: carefully follow these instructions when installing. do not overtighten screws. use of power driver is not recommended. screws to be tightened to a recommended 2.5Nm torque.



fit here on door edge

fit here on door edge

template



Gainsborough

installation template
for dummy applications

PAIT061