

INSTALLATION TEMPLATE

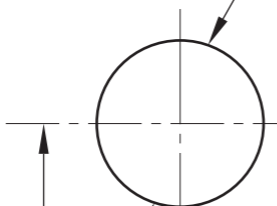
755 Profile Cylinder Mortise Lock

Fit here on door edge

To reverse hand insert screwdriver, press against spring and turn latch bolt.



22mm
(7/8") hole



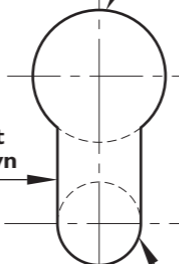
85mm

Cut out
as shown

BACKSET
30mm

17.5mm
(11/16")
hole

Cut out
as shown



11mm
(7/16") hole

Outline of mortise in door for 30mm backset mortise lock
176mm (6 15/16") x 49mm (1 15/16") x 17.5mm (11/16") Deep

Fit here on door edge

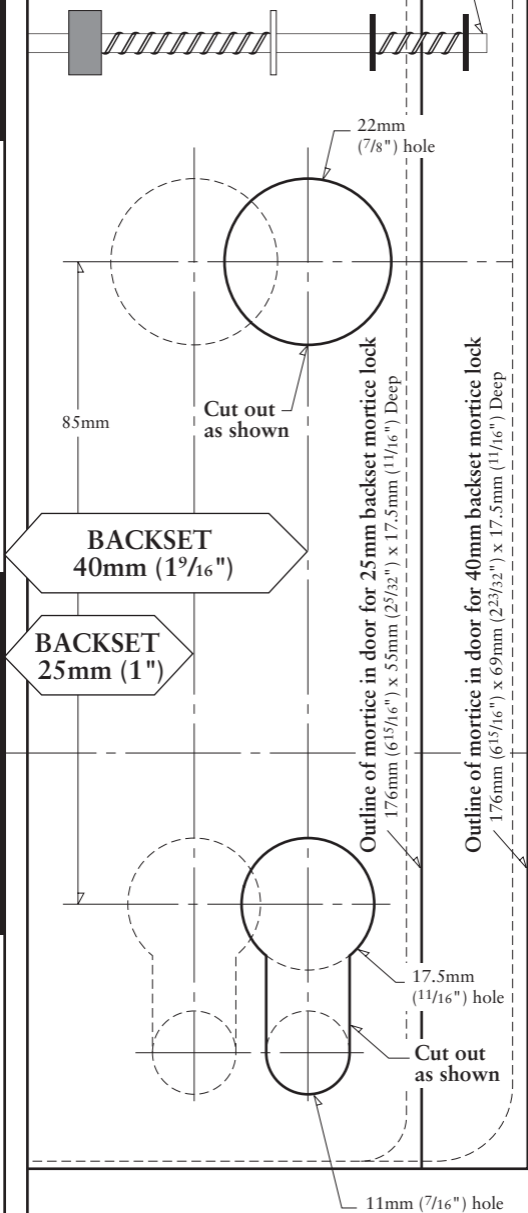
**Check in either side
of centre line of door**
240mm x 23mm x 3mm Deep

INSTALLATION TEMPLATE

755 Profile Cylinder Mortise Lock

Fit here on door edge

To reverse hand insert screwdriver
press and turn latch bolt



Fit here on door edge

Check in either side of centre line of door
240mm x 23mm x 3mm Deep

INSTALLATION TEMPLATE

755 Profile Cylinder Mortise Lock

Fit here on door edge

To reverse hand insert screwdriver
press and turn latch bolt

9.5mm
(3/8") hole

22mm
(7/8") hole

9.5mm
(3/8") hole

85mm

Cut out
as shown

BACKSET 60mm (2³/₈")

BACKSET 50mm (1³¹/₃₂")

Outline of mortise in door for 50mm backset mortise lock
176mm (6¹⁵/₁₆") x 79mm (3¹/₈") x 17.5mm (1¹/₁₆") Deep

Outline of mortise in door for 60mm backset mortise lock
176mm (6¹⁵/₁₆") x 88mm (3⁵/₃₂") x 18mm (2³/₃₂") Deep

17.5mm
(1¹/₁₆") hole

Cut out
as shown

11mm (7/16") hole

Fit here on door edge

Check in either side of centre line of door
240mm x 23mm x 3mm Deep