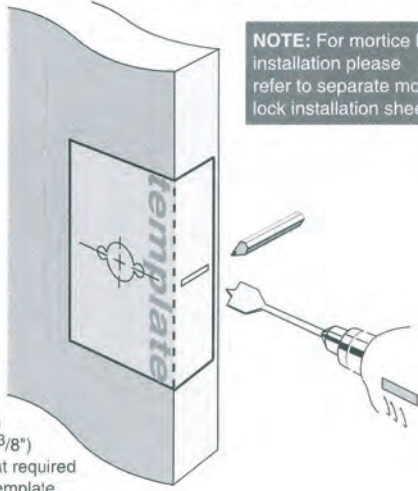


## Step 1

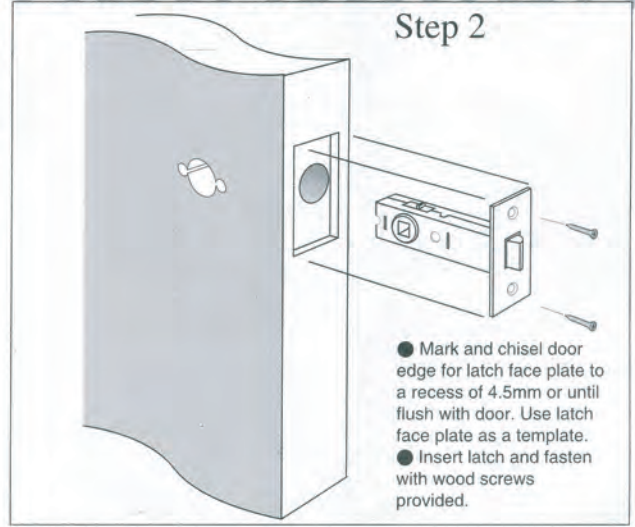
- Fold template where indicated.
- Position template on door edge at desired latch height.
- Firmly hold template and mark latch height and handle fixing holes at required backset (refer template).
- Measure door thickness and mark centre.
- Drill 25mm (1") latch hole. **Note:** it is important to drill this hole squarely.
- Drill two 6.0mm (1/4") holes and one 35mm (1 3/8") hole through door face at required backset as marked on template.



**NOTE:** For mortice lock installation please refer to separate mortice lock installation sheet.

## Step 2

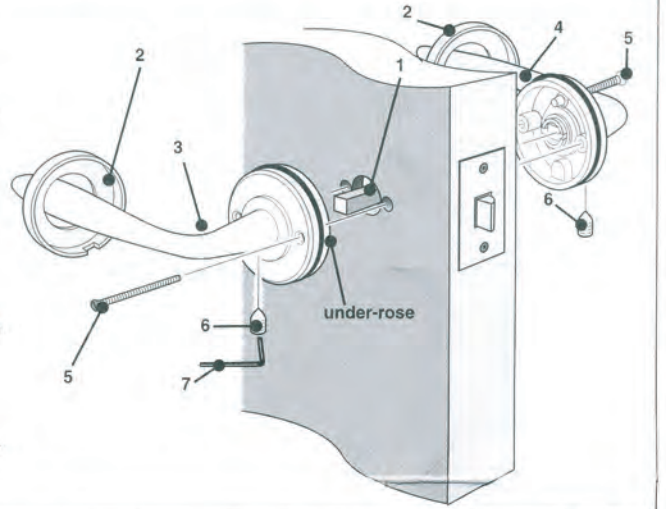
- Mark and chisel door edge for latch face plate to a recess of 4.5mm or until flush with door. Use latch face plate as a template.
- Insert latch and fasten with wood screws provided.



## Step 3

### Install lever assemblies to door

- Insert square drive spindle (1) through latch in door.
- Identify which side of the door each lever assembly will need to be located in order to allow both levers to move in a downward motion once installed.
- Remove rosette covers (2) from both lever assemblies.
- Place one lever assembly (3) on to the square drive spindle.
- Place other lever assembly (4) into position, locating it onto the other end of spindle.
- Fasten both lever assemblies together with screws provided (5): Use long screws for thick doors and short screws for thin doors. Each under-rose features a countersunk hole and a threaded hole. Install one screw from either side, through the countersunk hole, through latch and into the threaded hole of the opposite under-rose. Then tighten the screw head on each side.
- Tighten the grub screws (6) at base of levers on both sides with the hexagonal key (7) provided.
- Re-apply rosette covers (2) to both under-roses by pushing the covers over the rubber rings until flush with door.



**NOTE:** Carefully follow these instructions when installing. Screws to be tightened to a recommended 2.5Nm torque.

fit here on door edge

Mark centre-line of latch hole

Mark centre-line of latch hole

fit here on door edge

backset 70mm (2 3/4")

backset 60mm (2 3/8")

**Note:**  
Drill ø6.0mm holes before ø35mm hole for ease of drilling

ø6.0mm (1/4") hole  
35mm (1 3/8") hole

ø6.0mm (1/4") hole

*Gainsborough*

Gainsborough Hardware Industries Ltd  
ACN 004 792 269 ABN 25 004 792 269  
190 Whitehorse Road, Blackburn, Victoria 3130

Scale: 100% when printed at standard A4 size

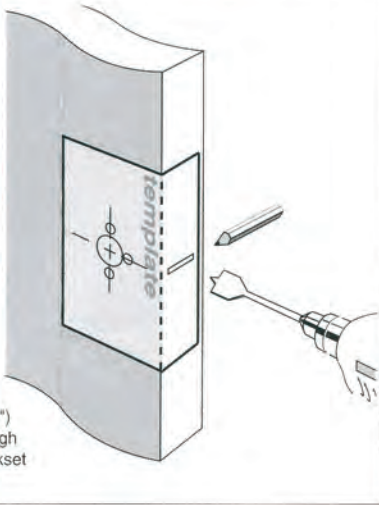
Installation template for passage applications

PAIT 054

# Installation Instructions for 710/715 series lever sets

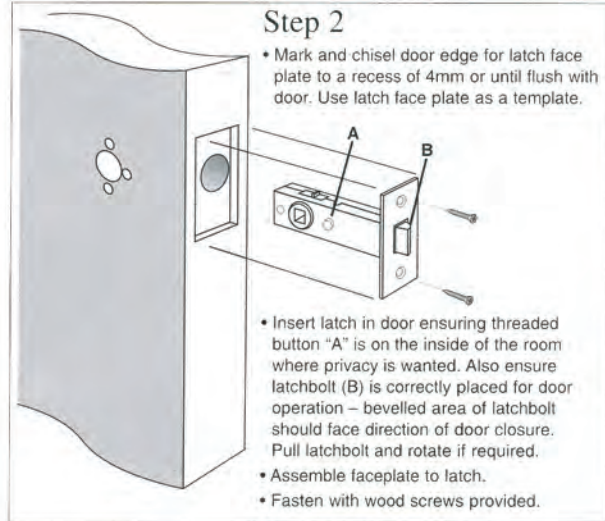
## Step 1

- Fold template where indicated.
- Position template on door edge at desired latch height.
- Firmly hold template and mark latch height and handle fixing holes at required backset (refer template).
- Measure door thickness and mark centre.
- Drill 25mm (1") latch hole. **Note:** it is important to drill this hole squarely.
- Drill three 8mm (5/16") holes and one 28mm (1 1/8") to 35mm (1 3/8") hole through door face at required backset as marked on template.



## Step 2

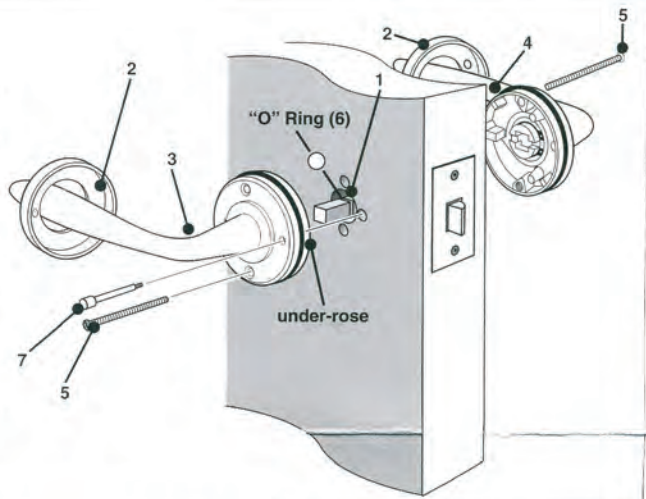
- Mark and chisel door edge for latch face plate to a recess of 4mm or until flush with door. Use latch face plate as a template.
- Insert latch in door ensuring threaded button "A" is on the inside of the room where privacy is wanted. Also ensure latchbolt (B) is correctly placed for door operation – bevelled area of latchbolt should face direction of door closure. Pull latchbolt and rotate if required.
- Assemble faceplate to latch.
- Fasten with wood screws provided.



## Step 3

### Install lever assemblies to door

- Insert square drive spindle (1) through latch in door.
- Put "O" ring (6) onto groove in spindle from other side of door to that which the spindle entered.
- Identify which side of the door each lever assembly will need to be located in order to allow both levers to move in a downward motion once installed.
- Remove rosette covers (2) from both lever assemblies.
- Place one lever assembly (3) on to the square drive spindle.
- Place other lever assembly (4) into position, locating it onto the other end of spindle.
- Fasten both lever assemblies together with screws (5): Use long screws for thick doors and short screws for thin doors. Each under-rose features a countersunk hole and a threaded hole. Install one screw from either side, through the countersunk hole and into the threaded hole of the opposite under-rose. Then tighten the screw head on each side.
- Re-apply rosette covers (2) to both under-roses by pushing the covers over the rubber rings until flush with door. Ensure small hole in cover is over hole in under-rose.
- Install the privacy button (7) through the rosette cover and screw tight.



**NOTE: Carefully follow these instructions when installing. Screws to be tightened to a recommended 2.5Nm torque.**

Fit here on door edge

Mark centre-line of latch hole  
Mark centre-line of latch hole

Fit here on door edge

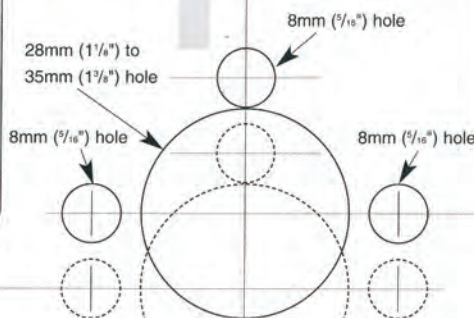
### Note:

Drill 8mm holes before 28 to 35mm hole for ease of drilling

**Gainsborough**<sup>®</sup>

Gainsborough Hardware Industries Ltd.  
ACN 004 792 269 ABN 25 004 792 269  
190 Whitehorse Road Blackburn, Victoria 3130  
Telephone (03) 9877 1555

backset 70mm (2 3/4")



backset 60mm (2 3/8")

Suits doors 32mm (1 1/4") to 40mm (1 3/4") thick. Screws available from Gainsborough Hardware Limited for thicker doors, if required.

Installation template for privacy applications

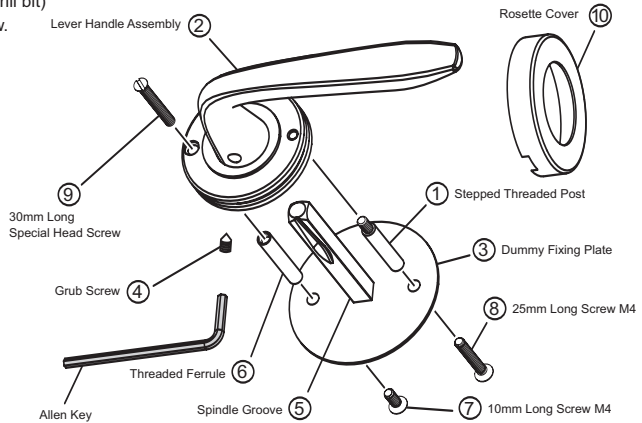
PAIT 062

# Installation Instructions for Contractor 720 Series Dummy Lever

## Option 1: Through-fixing (Recommended Option).

Note: Notch in rosette cover should point to floor – refer diagram.

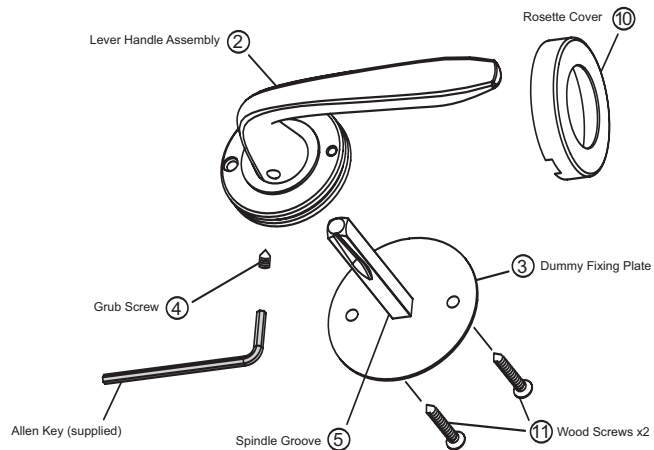
1. Drill one 15mm hole (using spade bit) through the door and two 6mm holes (using drill bit) through the door at required distance (backset) from door edge-refer template below.
2. Fit the stepped threaded post (1) provided to the threaded hole in the underside of the lever handle assembly (2).
3. Temporarily fit the dummy fixing plate (3) into the lever handle assembly, ensuring both the handle grub screw (4) and spindle groove (5) point to the floor. (This will allow you to identify the hole opposite the fixed stepped threaded post to which the threaded ferrule (6) will be fixed to in Step 4.)
4. Now holding only the dummy fixing plate, fix the threaded ferrule to the previously identified hole in the fixing plate using the 10mm long screw (7) provided.
5. Fit the dummy fixing plate to the door, and fit the lever handle assembly onto the spindle and nip the grub screw, ENSURING HANDLE GRUB SCREW AND GROOVE OF THE FIXING PLATE SPINDLE POINT TO THE FLOOR.
6. Fit the 25mm screw (8) through the fixing plate and into the stepped threaded post. Now fit the 30mm long special headed screw (9) through the lever handle assembly into the threaded ferrule. Loosen the grub screw and tighten both of the mounting screws, then re-tighten the grub screw.
7. Slide the rosette cover (10) over the lever (ensuring notch in rosette cover is pointing to the floor) and fix into position (refer to diagram).



## Option 2: Wood screw fixing

1. Drill one 15mm hole (using spade bit) through the door at required distance (backset) from door edge-refer template below.
2. Drill two only pilot holes for wood screws-ONLY on the side of door to which dummy fixing plate (3) will be affixed.  
NOTE: DO NOT DRILL THESE TWO PILOT HOLES THROUGH THE DOOR
3. Fix the dummy fixing plate (3) to the door with the 2 wood screws (11).
4. With rosette cover (10) in place, fit the lever handle assembly (2) onto the spindle, ENSURING HANDLE GRUB SCREW AND GROOVE OF FIXING PLATE POINT TO THE FLOOR. Push lever handle assembly hard up against door prior to tightening grub screw.

Note: Notch in rosette cover should point to floor – refer diagram.



**NOTE: Carefully follow these instructions when installing. Screws to be tightened to a recommended 2.5Nm torque.**

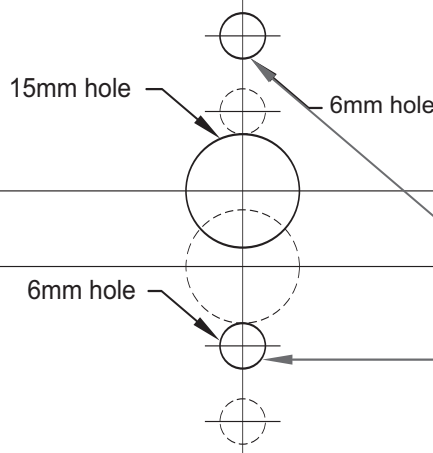


FOLD HERE

FOLD HERE

Fit here on door edge

Fit here on door edge



Note: Drill 2mm pilot hole only for option 2. Do not drill 6mm hole.

Installation template for dummy applications



Gainsborough Hardware Industries Limited  
 ABN 25 004 792 269  
 190 Whitehorse Road, Blackburn, Victoria 3130  
[www.gainsboroughhardware.com.au](http://www.gainsboroughhardware.com.au)