

**Concealed Fix Only**

### Step 1.

- fold template where indicated.
- position template on door edge at desired latch height.
- firmly hold template and mark latch height and handle fixing holes at required backset.
- measure door thickness and mark centre.
- drill 25mm (1") latch hole. **NOTE:** it is important to drill this hole squarely.
- drill two 10mm (3/8") holes and then one 35mm (1 3/8") hole on door face at required backset as marked with template.

**NOTE:** for mortice lock installations please refer to separate mortice lock installation sheet. Steps 3, 4 & 5 on this sheet may be used for final assembly of levers.

### Step 2.

**NOTE:** Use in conjunction with Gainsborough 480 or 960/980 Dual Sprung Latch – purchase separately

- Mark and chisel door edge for latch faceplate. Chisel the recess to a depth that allows the latch faceplate to sit flush with the door edge. Use latch faceplate as a template.
- Insert latch and fasten with wood screws provided.

### Step 3.

- insert square drive. standard square drive suits 32mm - 45mm door thicknesses, for thicker doors a special order spindle may be used.

### Step 4.

Unscrew rosette cover on inside lever assembly by rotating anti-clockwise to free rosette base.

### Step 5.

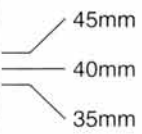
- fasten internal rosette base (1) and external lever-rosette (2) together with screws provided (3). **NOTE:** ensure screws are located on the internal side of the door and rosette base is correct way up as shown.
- screw lever-rosette cover (4) to internal rosette base clockwise.

**NOTE: carefully follow these instructions when installing. do not overtighten screws. use of power driver is not recommended. screws to be tightened to a recommended 2.5Nm torque.**

fit here on door edge

mark centre-line of latch hole

fit here on door edge



# template

backset 70mm (2 3/4")

backset 60mm (2 3/8")

10mm hole

35mm hole

**NOTE: Drill the two 10mm holes first, followed by the 35mm hole.**

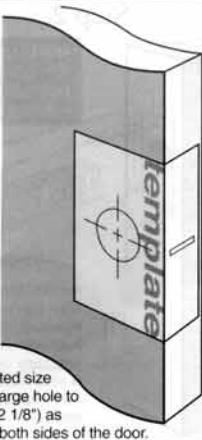


**installation template for passage applications**

**Concealed Fix Only**

**Step 1.**

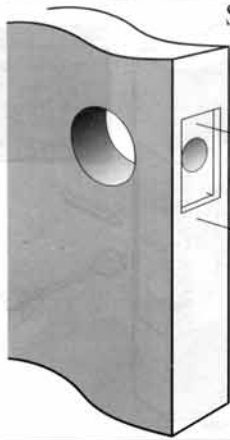
- fold template where indicated.
- position template on door edge at desired latch height.
- firmly hold template and mark latch height and hole centre at required backset.
- measure door thickness and mark centre.
- drill 25mm (1") latch hole. **NOTE:** it is important to drill this hole squarely.
- at required backset drill pilot hole (suggested size 3mm (1/8")). Then enlarge hole to 50mm (2") or 54mm (2 1/8") as required, drilling from both sides of the door.



**NOTE:** for mortice lock installations please refer to separate mortice lock installation sheet. Steps 3, 4 & 5 on this sheet may be used for final assembly of levers.

**Step 2.**

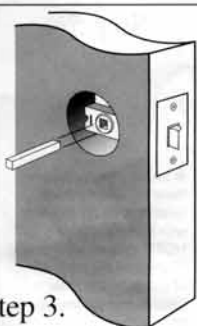
**Note:** Use in conjunction with Gainsborough 480 or 960/980 Dual Sprung Latch – purchase separately



- Mark and chisel door edge for latch faceplate. Chisel the recess to a depth that allows the latch faceplate to sit flush with the door edge. Use latch faceplate as a template.
- Insert latch and fasten with wood screws provided.

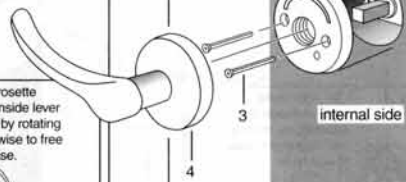
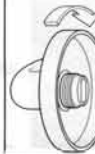
**Step 3.**

- insert square drive, standard square drive suits 35mm - 45mm door thicknesses, for thicker doors a special order spindle may be used.



**Step 4.**

Unscrew rosette cover on inside lever assembly by rotating anti-clockwise to free rosette base.



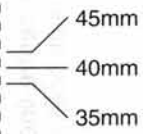
**Step 5.**

- fasten internal rosette base (1) and external lever-rosette (2) together with screws provided (3). **NOTE:** ensure screws are located on the internal side of the door and rosette base is correct way up as shown.
- screw lever-rosette cover (4) to internal rosette base clockwise.

**NOTE:** carefully follow these instructions when installing. do not overtighten screws. use of power driver is not recommended. screws to be tightened to a recommended 2.5Nm torque.

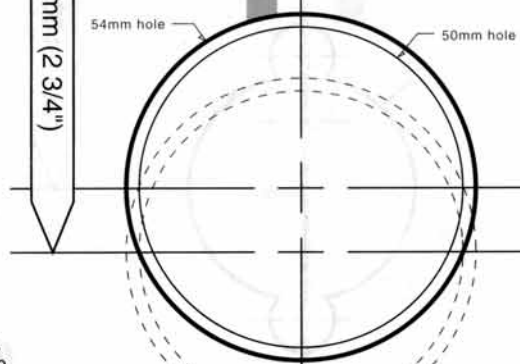
fit here on door edge

mark centre-line of latch hole



fit here on door edge

backset 70mm (2 3/4")



backset 60mm (2 3/8")

**installation template for doors with pre-bored holes or where installation of privacy adaptor is required**

*If using leverset with a '9009' Privacy Adaptor, it is recommended to drill a 54mm cross bore hole. The privacy adaptor will fit a 50mm cross bore hole, providing this hole has been drilled to correct diameter and at precise back set from door edge.*