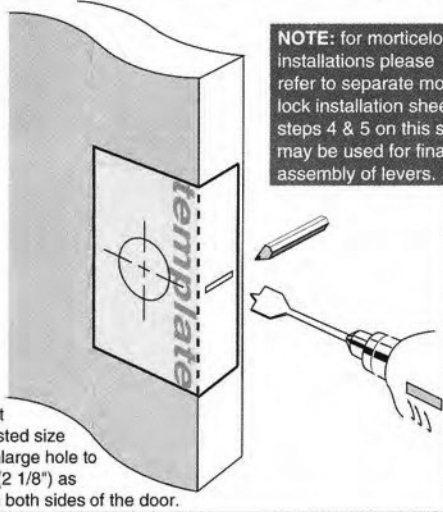


note: these instructions are common to all Gainsborough 8000 & 9000 series handle sets

### Step 1.

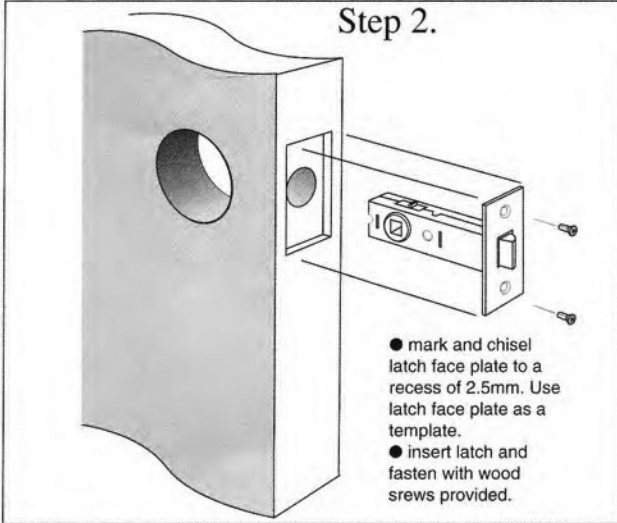
- fold template where indicated.
- position template on door edge at desired latch height.
- firmly hold template and mark latch height and hole centre at required backset.
- measure door thickness and mark centre.
- drill 25mm (1") latch hole. **NOTE:** it is important to drill this hole squarely.
- at required backset drill pilot hole [suggested size 3mm (1/8")]. Then enlarge hole to 50mm (2") or 54mm (2 1/8") as required, drilling from both sides of the door.



**NOTE:** for mortice lock installations please refer to separate mortice lock installation sheet. steps 4 & 5 on this sheet may be used for final assembly of levers.

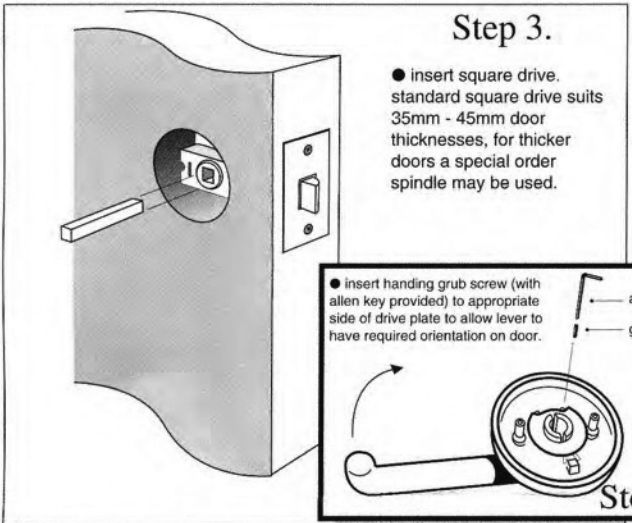
### Step 2.

- mark and chisel latch face plate to a recess of 2.5mm. Use latch face plate as a template.
- insert latch and fasten with wood screws provided.

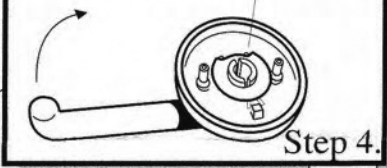


### Step 3.

- insert square drive. standard square drive suits 35mm - 45mm door thicknesses, for thicker doors a special order spindle may be used.



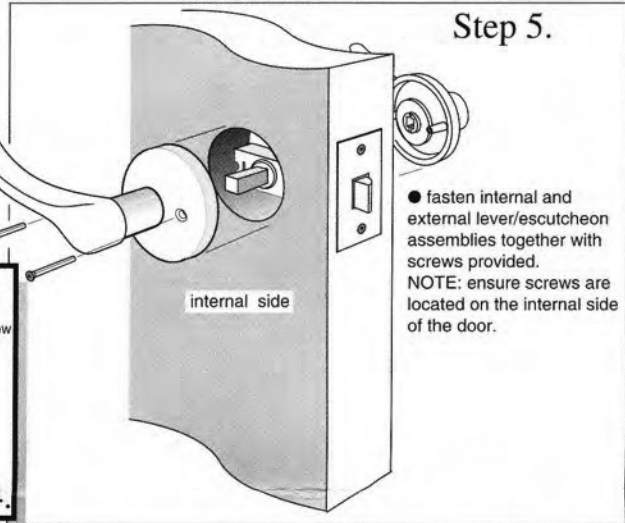
- insert handing grub screw (with allen key provided) to appropriate side of drive plate to allow lever to have required orientation on door.



### Step 4.

### Step 5.

- fasten internal and external lever/escutcheon assemblies together with screws provided. **NOTE:** ensure screws are located on the internal side of the door.

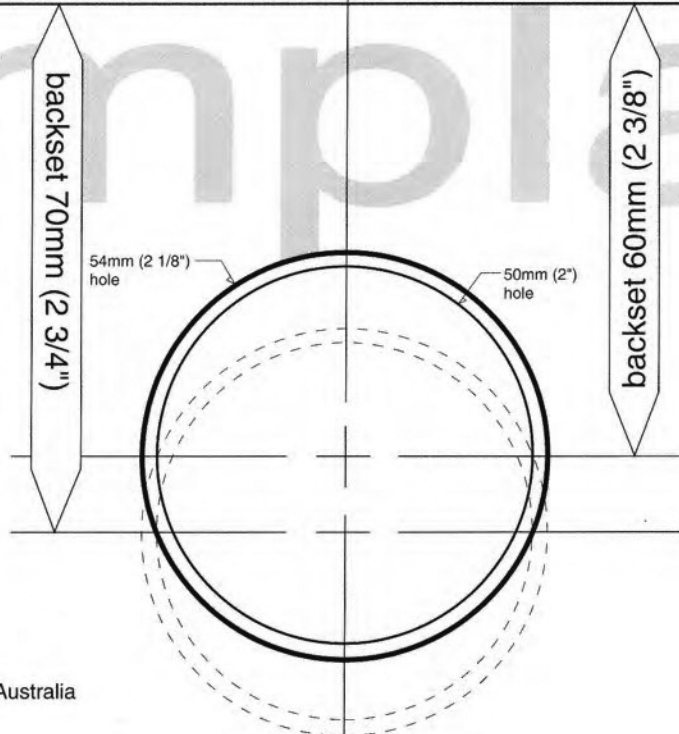


**NOTE:** carefully follow these instructions when installing. do not overtighten screws. use of power driver is not recommended. screws to be tightened to a recommended 2.5Nm torque.

fit here on door edge

mark centre-line of latch hole

fit here on door edge

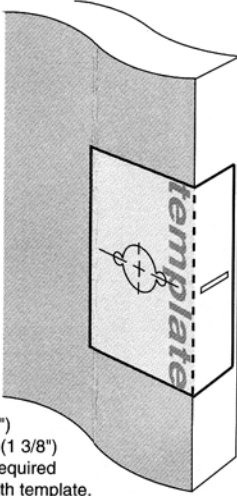


installation template for doors with pre-bored holes or where installation of privacy adapter is required

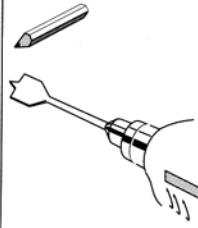
note: these instructions are common to all Gainsborough 8000 & 9000 series handle sets

### Step 1.

- fold template where indicated.
- position template on door edge at desired latch height.
- firmly hold template and mark latch height and handle fixing holes at required backset.
- measure door thickness and mark centre.
- drill 25mm (1") latch hole. **NOTE:** it is important to drill this hole squarely.
- drill two 10mm (3/8") holes and one 35mm (1 3/8") hole on door face at required backset as marked with template.

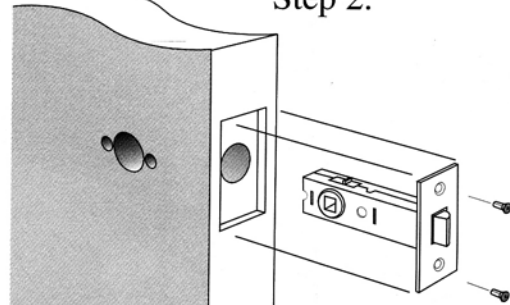


**NOTE:** for mortice lock installations please refer to separate mortice lock installation sheet. steps 4 & 5 on this sheet may be used for final assembly of levers.



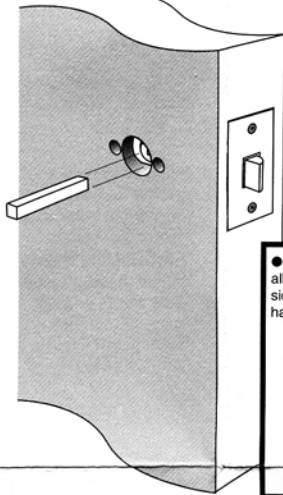
### Step 2.

- mark and chisel latch face plate to a recess of 2.5mm. Use latch face plate as a template.
- insert latch and fasten with wood screws provided.

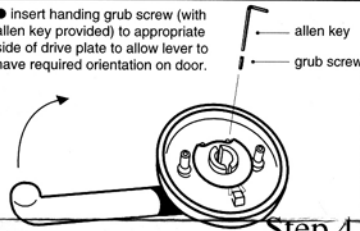


### Step 3.

- insert square drive. standard square drive suits 35mm - 45mm door thicknesses, for thicker doors a special order spindle may be used.



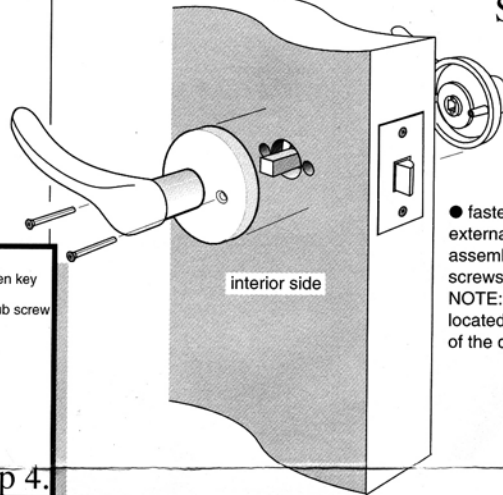
- insert handing grub screw (with allen key provided) to appropriate side of drive plate to allow lever to have required orientation on door.



### Step 4.

### Step 5.

- fasten internal and external lever/escutcheon assemblies together with screws provided. **NOTE:** ensure screws are located on the internal side of the door.

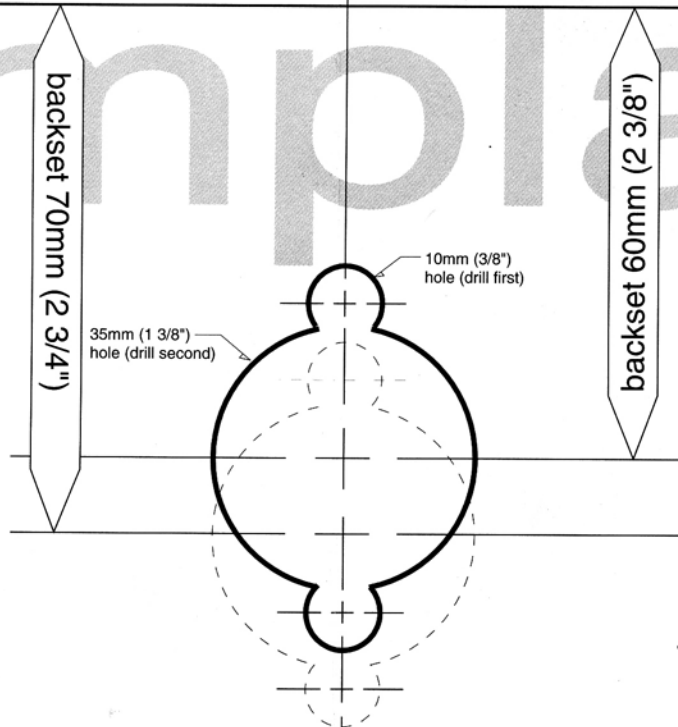


**NOTE:** carefully follow these instructions when installing. do not overtighten screws. use of power driver is not recommended. screws to be tightened to a recommended 2.5Nm torque.

fit here on door edge

mark centre-line of latch hole  
mark centre-line of latch hole

fit here on door edge



installation template for passage applications