

Details that make doors



Call **1300 361 077** for more information
www.gainsboroughhardware.com.au

The Gainsborough Architectural Hardware Range



The Gainsborough Architectural Hardware range has developed into an impressive collection of door hardware products, designed to meet the needs of today's commercial building activity.

This brochure now includes the Horizon and Oblong 1800mm pull handles, as well as the new Horizon 32mm diameter 750mm pull handle. A summary of the Exidor Panic and Emergency Exit hardware is also shown for your convenience.

Manufactured to the highest standards, the Architectural range features a variety of popular and aesthetic finishes, as detailed within.



The special keying facilities will accommodate the most complex of keying requirements, from master keyed to great grand master keyed systems. Restricted profile keyways are also available.

Gainsborough has renewed its certification under the ISO 9001:2000 Quality Management System and is included in the internationally acclaimed Lloyd's Register of Quality Assured Companies.

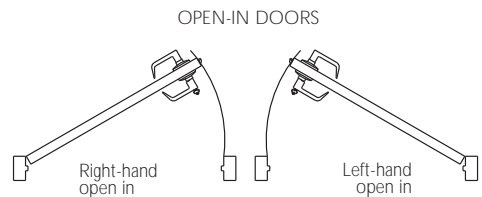


Gainsborough is a member of the GWA group of companies, which includes Caroma Dorf, Dux, Rover and Sebel. Significant investment in design, engineering and manufacturing operations has fostered the continual release of new products to the market, with a large number of products made by Gainsborough in Australia.

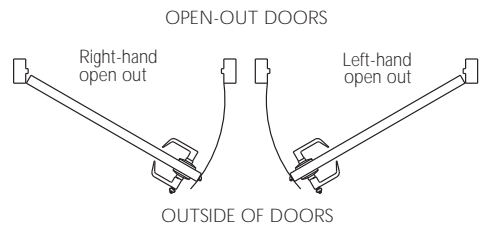
With this comprehensive range of Architectural hardware products, Gainsborough now offers one of the largest ranges of quality door locks and accessories available in Australia.

HANDING

Some of our door furniture products are handed. To assist you with identifying the required handing, please refer to the diagrams below for an explanation.



OUTSIDE OF DOORS



Note: For selection of left or right-handed 757 rebate kits, please refer to the handing information diagram shown on page 30.

9000 Series Brass Levers/Knobs on 65mm Brass Round Rosettes

- Range of brass levers and knobs on 65mm diameter brass round rosettes.
- Provides the ultimate in quality and durability.
- Choose from passage leverset or knobset; or dummy lever or knob.
- For use with 3000 or 755 series mortice locks for exterior doors or with 480 or 960/980 series tubular latches for interior doors.
- Can be used on fire doors.
- Visible fixing only.
- Suits a 50mm or 54mm diameter hole; or one 35mm and two 10mm diameter holes through door face when used with a 480 or 960/980 series tubular latch.
- To suit 32mm-45mm thick doors.*



Horizon lever on brass round rosette
9048 CP SC



President lever on brass round rosette
9050 CP SC



Round knob on brass round rosette
9051 CP PB SC



D lever on brass round rosette
9011 CP SC



Elliptical knob on brass round rosette
9052 CP PB SC



Form lever on brass round rosette
9012 CP PB SC



Senator lever on brass round rosette
9065 CP SC



Linear lever on brass round rosette
9013 CP SC



When ordering, add relevant finish code to form complete catalogue number, as shown under products illustrated.

For dummy lever versions, add 'D' to the number shown, followed by the relevant finish code.

* Denotes longer screws available (FAMT 124) to suit 50mm thick doors.

9000 Series Cylinder, Turnbutton and Emergency Release 52mm Escutcheons



- Range of round cylinder, turnbutton and emergency release escutcheons.
- To suit the 9000 series or 9100/9300 series when used in conjunction with mortice locks.
- 52mm Diameter – Round



Oval cylinder escutcheon* to suit 1000 or 3000 series mortice locks
10E2 BG CP DB PB SC



Euro profile cylinder escutcheon* to suit 755 series mortice lock
10EU2 BG CP DB PB SC



Interior turnbutton escutcheon
10T2 BG CP DB PB SC



Emergency release escutcheon
10R2 BG CP DB PB SC



External oval cylinder escutcheon to suit 3000 series mortice locks.*
For use with 10T2I or 10E2I
Supplied with fixing screws

Through fixing for
– Double cylinder functions
– Single cylinder and turnbutton functions
10E2E BG CP DB PB SC



Internal oval cylinder escutcheon* used with 10E2E

Through fixing for
– Double cylinder functions
10E2I BG CP DB PB SC



Internal turnbutton escutcheon used with 10E2E, 10R2E and 10R12E

Through fixing for
– Single cylinder and turnbutton functions
– Emergency release and turnbutton
– Emergency release indicating and turnbutton
10T2I BG CP DB PB SC



External emergency release button used with 10T2I

Through fixing for
– Emergency release and turnbutton
10R2E BG CP DB PB SC



External emergency release indicating button used with 10T2I

Through fixing for
– Emergency release indicating and turnbutton
10R12E BG CP DB PB SC

When ordering, add relevant finish code to form complete catalogue number, as shown under products illustrated.
* Denotes cylinder purchased separately.

9100 Series Levers on 65mm Stepped Round Rosettes

- Features an array of stylish levers on 65mm diameter stepped round rosettes.
- Choose from passage leverset or dummy lever options.
- For use with 3000 or 755 series mortice locks for exterior doors or with 480 or 960/980 series tubular latches for interior doors.

- Concealed fixing.
- Suits a 50mm or 54mm diameter hole; or one 35mm and two 10mm diameter holes through door face when used with a 480 or 960/980 series tubular latch.
- Can be used on fire doors.
- To suit 32mm-45mm thick doors.*



Brass Lever/Alloy Rose



Linear lever on stepped round rosette
9113 CP SC



Horizon lever on stepped round rosette
9148 CP SC



President lever on stepped round rosette
9150 CP SC



Senator lever on stepped round rosette
9165 CP SC

Alloy Lever/Alloy Rose



Dias lever on stepped round rosette**
9131L BG CP DB SC



Form lever on stepped round rosette
9132 BG CP DB SC



Zephyr lever on stepped round rosette**
9160L CP SC



Aero lever on stepped round rosette
9161 CP SC



Curvelle lever on stepped round rosette**
9162L CP SC



Outline lever on stepped round rosette
9189 BGS CPS DBS SCS



When ordering, add relevant finish code to form complete catalogue number, as shown under products illustrated.
For dummy lever versions, add 'D' to the number shown, followed by the relevant finish code.

* Denotes longer screws available (FAMT 124) to suit 50mm thick doors.

** Denotes to specify Left (L) or Right-Handed (R) when ordering.

9300 Series Levers on 65mm Smooth Round Rosettes



- Features an array of stylish levers on 65mm diameter smooth round rosettes.
- Choose from passage leverset or dummy lever options.
- For use with 3000 or 755 series mortice locks for exterior doors or with 480 or 960/980 series tubular latches for interior doors.
- Concealed fixing.
- Suits a 50mm or 54mm diameter hole; or one 35mm and two 10mm diameter holes through door face when used with a 480 or 960/980 series tubular latch.
- Can be used on fire doors.
- To suit 32mm-45mm thick doors.*

Brass Lever/Alloy Rose



Linear lever on smooth round rosette
9313 CP SC



Horizon lever on smooth round rosette
9348 CP SC



President lever on smooth round rosette
9350 CP SC



Senator lever on smooth round rosette
9365 CP SC

Alloy Lever/Alloy Rose



Dias lever on smooth round rosette**
9331L BG CP DB SC



Form lever on smooth round rosette
9332 BG CP DB SC



Zephyr lever on smooth round rosette**
9360L CP SC



Aero lever on smooth round rosette
9361 CP SC



Curvelle lever on smooth round rosette**
9362L CP SC

When ordering, add relevant finish code to form complete catalogue number, as shown under products illustrated. For dummy lever versions, add 'D' to the number shown, followed by the relevant finish code.

* Denotes longer screws available (FAMT 124) to suit 50mm thick doors.

** Denotes to specify Left (L) or Right-Handed (R) when ordering.

Privacy Adaptor

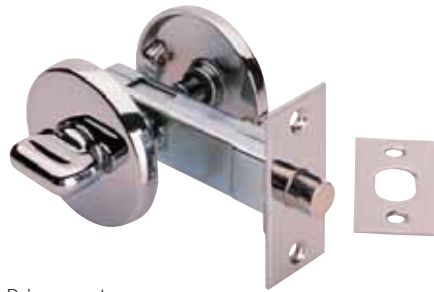
- Economical and clever way to add privacy locking to the 9100 or 9300 series leversets.
- Innovative one piece design-installed to the inside of the door.
- Internal locking, panic release from the inside and emergency access from the outside.
- Suits 9100 and 9300 series, and at a future date will also suit the 9000 brass series.
- Will not suit the 9200, 9400, 9600 and 9900 series or 300 series door furniture.
- Concealed fixing.
- Requires a 50mm or 54mm diameter hole through door face.



Privacy adaptor with Dias leverset
9009 **BG** **CP** **DB** **SC**

Auxiliary Privacy Set

- Normally installed above passage leverset to add privacy locking to internal doors.
- Complements the 9000, 9100 and 9300 series round rosette.
- Incorporates privacy bolt, internal turnbutton escutcheon and external emergency release escutcheon.
- Concealed fixing.
- Suits a 22mm diameter hole through door face.
- For doors 35mm to 45mm thick.
- 60mm backset.



Privacy set
93PS **BG** **CP** **DB** **PB** **SC**



When ordering, add relevant finish code to form complete catalogue number, as shown under products illustrated.



Auxiliary Privacy Set

- Normally installed above a passage leverset to add privacy locking to internal doors.
- Complements the Contractor 700 series leversets – please refer to the Gainsborough Home Collection brochure for further details on the Contractor 700 series.
- Incorporates privacy bolt, internal turnbutton escutcheon and external emergency release escutcheon.
- Concealed fixing.
- Suits a 22mm diameter hole through door face.
- For doors 35mm to 45mm thick.
- 60mm backset.



Privacy set
94PS** CP

Cylinder, Turnbutton and Emergency Release Escutcheons

- Range of round brass cylinder, turnbutton and emergency release escutcheons (all 53mm diameter except oval which is 50mm).
- These brass escutcheons coordinate in style and finish with the Contractor 700 series leversets – please refer to the Gainsborough Home Collection brochure for further details on the Contractor 700 series.



Oval cylinder escutcheon*
to suit 1000 or 3000 series mortice locks
10E3 CP SC



Interior turnbutton escutcheon
10T3 CP SC



Euro profile cylinder escutcheon*
to suit 755 or 655 series mortice locks
10EU3 CP SC



Emergency release escutcheon
10R3 CP SC

When ordering, add relevant finish code to form complete catalogue number, as shown under products illustrated.

* Denotes cylinder purchased separately.

** Note: Available in Chrome Plate only.

Stainless Steel for Higher Corrosion Resistance

- Fashionable lever designs with concealed fixing.
- Non-handed to suit left or right-handed doors.
- For use with 3000, 755 or 655 series mortice locks for exterior doors and with 480 or 960/980 series tubular latches for interior doors.
- Suits one 35mm and two 6mm diameter holes through door face when used with a 480 or 960/980 series tubular latch.

Note: A 50mm diameter hole is required when used with a 9609 privacy adaptor.

- For doors 35mm to 45mm thick.**
- Can be used on fire doors.



Applicable to 9400 Series Solid Leversets only, not applicable to Privacy Adaptor.

Solid Stainless Steel Levers – Premium quality design options.



Ariel lever on round rosette
9420 SS



Peloris lever on round rosette
9427 SS



Taeping lever on round rosette
9425 SS



Alliance lever on round rosette
9429 SS



When ordering, add relevant finish code to form complete catalogue number, as shown under products illustrated.
** Denotes longer screws available (FAMT124) to suit 50mm thick doors.

(continued overleaf)



**Tubular Stainless Steel Levers –
Economical tubular design options.**



Metax lever on round rosette
9421 SS



Asgard lever on round rosette
9424 SS



Fantome lever on round rosette
9428 SS

Privacy Adaptor

- Economical and clever way to add privacy locking to the 9400 series stainless steel leversets.
- Innovative one piece design – installed to the inside of the door.
- Internal locking, panic release from the inside and emergency access from the outside.
- Suits the 9400 series stainless steel leversets and will not suit the 9000, 9100, 9200, 9300 and 9900 series door furniture or 300 series door furniture.

Note: The 9609 privacy adaptor design is also offered in other finishes to suit the 9600 series, as detailed on page 16.

- Concealed fixing.
- Requires a 50mm diameter hole through door face.



Privacy adaptor with Taeping leverset
9609 SSF

When ordering, add relevant finish code to form complete catalogue number, as shown under products illustrated.

Auxiliary Privacy Set

- Normally installed above passage leverset to add privacy locking to internal doors.
- 55mm diameter rosettes to complement the 9400 series levers.
- Incorporates privacy bolt, internal turnbutton escutcheon and external emergency release escutcheon.
- Concealed fixing.
- Suits a 25mm diameter hole through door face.
- For doors 35mm to 45mm thick.
- 60mm backset.



Auxiliary privacy set
96PS SS

Note: Faceplate and strike plate are finished in Satin Chrome

Sliding Bolt Set

- Suits sliding doors.
- 55mm diameter rosettes to complement the 9400 series stainless steel levers.
- Incorporates latch, internal turnbutton escutcheon and emergency release escutcheon. (No indicator.)
- Concealed fixing.
- Suits a 35mm diameter hole through door face.
- For doors 35mm to 45mm thick.
- 60mm backset.
- Not able to be recessed into sliding door pocket.



Sliding bolt set
96SB SS

Note: Faceplate and strike plate are finished in Satin Chrome

Round Cylinder, Turnbutton and Emergency Release Escutcheons

- Concealed fixing.
- Coordinates with the 9400 series levers when used in conjunction with mortice locks.
- 55mm diameter x 12mm thick.



External oval cylinder escutcheon* to suit 3000 series mortice locks. For use with 10T4 or 10E4

Through fixing for
– Double cylinder function
– Single cylinder and turnbutton function

10E4E SS



Applicable to Key Escutcheons only; not applicable to Auxiliary Privacy Set or Sliding Bolt Set.



Oval cylinder escutcheon* to suit 1000 or 3000 series mortice locks
10E4 SS



Euro cylinder escutcheon*
10EU4 SS



Interior turnbutton escutcheon
10T4 SS



Emergency release escutcheon
10R4 SS

When ordering, add relevant finish code to form complete catalogue number, as shown under products illustrated.
* Denotes cylinder purchased separately.





Applicable to 9200 Series
Solid Leversets only; not applicable
to Privacy Adaptor.

Stainless Steel for Higher Corrosion Resistance

- Fashionable lever designs on square backplates (58mm x 58mm) with concealed fixing.
- Non-handed to suit left or right-handed doors.
- For use with 3000 or 755 series mortice locks for exterior doors and with 480 or 960/980 series tubular latches for interior doors.
- Suits one 35mm and two 6mm diameter holes through door face when used with a 480 or 960/980 series tubular latch.

Note: A 50mm diameter hole is required when used with a 9909 privacy adaptor.

- For doors 35mm to 45mm thick.**
- Can be used on fire doors.

Solid Stainless Steel Levers – Premium quality design options.



Ariel lever on square backplate
9220 SS



Peloris lever on square backplate
9227 SS



Taeping lever on square backplate
9225 SS



Alliance lever on square backplate
9229 SS

When ordering, add relevant finish code to form complete catalogue number, as shown under products illustrated.
** Denotes longer screws available (FAMT124) to suit 50mm thick doors.

**Tubular Stainless Steel Levers –
Economical tubular design options.**



Metax lever on square backplate
9221 SS



Asgard lever on square backplate
9224 SS



Fantome lever on square backplate
9228 SS

Privacy Adaptor

- Economical and clever way to add privacy locking to the 9200 series stainless steel leversets.
- Innovative one piece design – installed to the inside of the door.
- Internal locking, panic release from the inside and emergency access from the outside.
- Suits the 9200 series stainless steel leversets and will not suit the 9000, 9100, 9300, 9400 series door furniture or 300 series door furniture.

Note: The 9909 privacy adaptor design is also offered in other finishes to suit the 9900 series, as detailed on page 18.

- Concealed fixing.
- Requires a 50mm diameter hole through door face.



Privacy adaptor with Metax leverset
9909 SSF





Auxiliary Privacy Set

- Normally installed above passage lever set to add privacy locking to internal doors.
- 58mm square backplates to complement the 9200 series levers.
- Incorporates privacy bolt, internal turnbutton escutcheon and external emergency release escutcheon.
- Concealed fixing.
- Suits a 25mm diameter hole through door face.
- For doors 35mm to 45mm thick.
- 60mm backset.



Auxiliary privacy set
99PS SS

Note: Faceplate and strike plate are finished in Satin Chrome

Sliding Bolt Set

- Suits sliding doors.
- 58mm square backplates to complement the 9200 series stainless steel levers.
- Incorporates latch, internal turnbutton escutcheon and emergency release escutcheon. (No indicator.)
- Concealed fixing.
- Suits a 35mm diameter hole through door face.
- For doors 35mm to 45mm thick.
- 60mm backset.
- Not able to be recessed into sliding door pocket.



Sliding bolt set
99SB SS

Note: Faceplate and strike plate are finished in Satin Chrome



Applicable to Key Escutcheons only; not applicable to Auxiliary Privacy Set or Sliding Bolt Set.

Square Cylinder, Turnbutton and Emergency Release Escutcheons

- Concealed fixing.
- Coordinates with the 9200 series levers when used in conjunction with mortice locks.
- 58mm diameter x 12mm thick.



External oval cylinder escutcheon* to suit 3000 series mortice lock. For use with 10T5 or 10E5 Through fixing for
– Double cylinder function
– Single cylinder and turnbutton function
10E5E SS



Oval cylinder escutcheon* to suit 1000 or 3000 series mortice locks
10E5 SS



Euro cylinder escutcheon*
10EU5** SS



Interior turnbutton escutcheon
10T5 SS



Emergency release escutcheon
10R5 SS

When ordering, add relevant finish code to form complete catalogue number, as shown under products illustrated.

* Denotes cylinder purchased separately.

** Note: Estimated to be available early 2009.

9600 Series Levers on 55mm Round Rosettes

- Selection of fashionable and innovative lever styles on 55mm diameter round rosettes.
- Choose from passage leverset or dummy lever options.
- Non-handed to suit left or right-handed doors.
Note: certain dummy levers are handed as shown.
- For use with 3000, 755 or 655 series mortice locks for exterior doors and with 480 or 960/980 series tubular latches for interior doors.

- Concealed fixing.
- Suits one 35mm and two 6mm diameter holes through door face when used with a 480 or 960/980 series tubular latch.

Note: A 50mm diameter hole is required when used with a 9609 privacy adaptor.

- To suit 32mm-45mm thick doors.*
- Can be used on fire doors.



Brass Lever/Alloy Rose



Linear lever on round rosette
9613 CP SC



Horizon lever on round rosette
9648 CP SC



President lever on round rosette
9650 CP SC



Senator lever on round rosette
9665 CP SC



Congress lever on round rosette
9668 CP SC

Alloy Lever/Alloy Rose



Form lever on round rosette
9632 BG CP DB SC



Inline lever on round rosette
9642 BG/SG CP/SC DB/SD SC/CP



Ergo lever on round rosette
9643 BG CP CP/DB DB SC SC/CP



Radius lever on round rosette
9644 BG CP DB SC



Crescent lever on round rosette
9645 CP SC



When ordering, add relevant finish code to form complete catalogue number, as shown under products illustrated.

For dummy lever versions, add 'D' to the number shown, followed by the relevant finish code.

* Denotes longer screws available (FAMT 124) to suit 50mm thick doors.

** Denotes for these dummy levers, specify Left (L) or Right-Handed (R) when ordering.



Applicable to 9600 Series Leversets only; not applicable to Privacy Adaptor or Auxiliary Privacy Set.

Alloy Lever/Alloy Rose



Arc lever on round rosette
9646 CP SC



Zephyr lever on round rosette*
9660 CP SC



Aero lever on round rosette
9661 CP SC



Curvelle lever on round rosette*
9662 CP SC

Auxiliary Privacy Set

- Normally installed above passage leverset to add privacy locking to internal doors.
- 55mm diameter rosettes to complement the 9600 series levers.
- Incorporates privacy bolt, internal turnbutton escutcheon and external emergency release escutcheon.
- Concealed fixing.
- Suits a 25mm diameter hole through door face.
- For doors 35mm to 45mm thick.
- 60mm backset.

Privacy Adaptor

- Economical and clever way to add privacy locking to the 9600 series leversets.
- Innovative, one piece design – installed to the inside of the door.
- Internal locking, panic release from the inside and emergency access from the outside.
- Suits the 9600 series leversets and will not suit the 9000, 9100, 9200, 9300 and 9900 series door furniture or 300 series door furniture.

Note: The 9609 privacy adaptor design is also available in 'SSF' (stainless steel finish) to suit the 9400 series stainless steel leversets, as detailed on page 10.

- Concealed fixing.
- Requires a 50mm diameter hole through door face.



Privacy adaptor with Ergo leverset
9609 BG CP DB SC



Inset shows external emergency release escutcheon on reverse



Auxiliary privacy set
96PS BG CP DB SC

Specify 96PSI for privacy set with "Emergency" release indicator escutcheon. Red for engaged, green for released-can also be used as an indicator bolt.



When ordering, add relevant finish code to form complete catalogue number, as shown under products illustrated.

For dummy lever versions, add 'D' to the number shown, followed by the relevant finish code.

* Denotes for these dummy levers, specify Left (L) or Right-Handed (R) when ordering.

Round Cylinder, Turnbutton and Emergency Release Escutcheons

- Range of round cylinder, turnbutton and emergency release escutcheons.
- Coordinates with the 9600 series levers when used in conjunction with mortice locks.
- Concealed fixing.
- 55mm diameter x 12mm thick.



Oval cylinder escutcheon* to suit 1000 or 3000 series mortice locks
10E4 BG CP DB SC



External oval cylinder escutcheon* to suit the 3000 series mortice locks. For use with 10T4 or 10E4 Through fixing for
– Double cylinder function
– Single cylinder and turnbutton function
10E4E BG CP DB SC



Emergency release escutcheon
10R4 BG CP DB SC



Euro profile cylinder escutcheon* to suit 755 or 655 series mortice locks
10EU4 BG CP DB SC



Emergency release indicator escutcheon. Red for engaged, green for released
10R14 BG CP DB SC



Interior turnbutton escutcheon
10T4 BG CP DB SC

Sliding Indicator Bolt Set

- Suits sliding doors.
- 55mm diameter round rosettes to complement the 9600 series levers.
- Incorporates latch, internal turnbutton escutcheon and external emergency release escutcheon – shows red for engaged and green for released.
- Concealed fixing.
- Suits a 35mm diameter hole through door face.
- For doors 35mm to 45mm thick.
- 60mm backset.
- Not able to be recessed into sliding door pocket.



Sliding indicator bolt set
96SIB CP SC



Inset shows external emergency release indicator escutcheon on reverse

Also available:

Sliding Bolt Set (without indicator)

- Features of this product are the same as detailed for 96SIB (above), however without indicator.



Sliding bolt set
96SB CP SC



Inset shows external emergency release escutcheon on reverse



Applicable to Key Escutcheons only; not applicable to Sliding Indicator Bolt Set or Sliding Bolt Set.



When ordering, add relevant finish code to form complete catalogue number, as shown under products illustrated.
* Denotes cylinder purchased separately.

9900 Series Levers on 58mm Square Backplates



Applicable to 9900 Series Leversets only; not applicable to Privacy Adaptor.

- Contemporary range of levers on square backplates (58mm by 58mm).
 - Concealed fixing.
 - Choose from passage leverset or dummy lever options.
 - Non-handed to suit left or right-handed doors.
- Note: Curvelle dummy lever is handed.
- For use with 3000 or 755 series mortice locks for exterior doors and with 480 or 960/980 series tubular latches for interior doors.

- Suits one 35mm and two 6mm diameter holes through door face when used with a 480 or 960/980 series tubular latch.

Note: A 50mm diameter hole is required when used with a 9909 privacy adaptor.

- To suit 32mm-45mm thick doors.*
- Can be used on fire doors.

Brass Lever/Alloy Rose



Linear lever on square backplate
9913 CP SC



President lever on square backplate
9950 CP SC



Senator lever on square backplate
9965 CP SC



Congress lever on square backplate
9968 CP SC

Alloy Lever/Alloy Rose



Radius lever on square backplate
9944 CP SC



Aero lever on square backplate
9961 CP SC



Curvelle lever on square backplate**
9962 CP SC

Privacy Adaptor

- Concealed fixing.
- Internal locking, panic release from the inside and emergency access from the outside.
- Requires a 50mm diameter hole through door face.



Privacy adaptor with Linear leverset
9909 CP SC

When ordering, add relevant finish code to form complete catalogue number, as shown under products illustrated.

For dummy lever versions, add 'D' to the number shown, followed by the relevant finish code.

* Denotes longer screws available (FAMT 124) to suit 50mm thick doors.

** Denotes for this dummy lever, specify Left (L) or Right-Handed (R) when ordering.

Square Cylinder, Turnbutton and Emergency Release 58mm Escutcheons

- Coordinates with the 9900 series levers when used in conjunction with mortice locks.



Oval cylinder escutcheon* to suit 3000 series mortice locks
10E5 CP SC



External oval cylinder escutcheon* to suit 3000 series mortice locks. For use with 10T5 or 10E5
10E5E CP SC



Emergency release escutcheon
10R5 CP SC



Euro profile cylinder escutcheon* to suit 755 series mortice lock
10EU5 CP SC



Emergency release indicator escutcheon. Red for engaged, green for released
10RI5 CP SC



Interior turnbutton escutcheon
10T5 CP SC



Applicable to Key Escutcheons only; not applicable to Auxiliary Privacy Set, Sliding Indicator Bolt Set or Sliding Bolt Set.

Auxiliary Privacy Set

- Normally installed above passage leverset to add privacy locking to internal doors.
- Incorporates privacy bolt, internal turnbutton escutcheon and external emergency release escutcheon.
- Concealed fixing. 60mm backset.
- Suits a 25mm diameter hole through door face. For doors 35mm to 45mm thick.



Inset shows external emergency release escutcheon on reverse

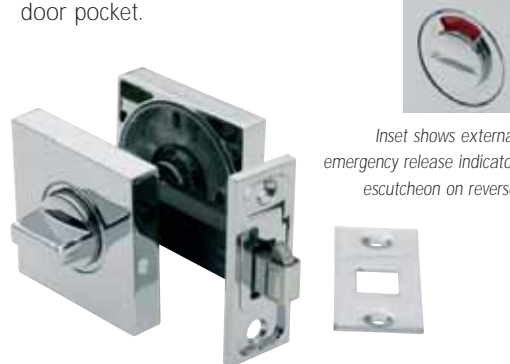
Auxiliary privacy set
99PS CP SC

Specify 99PSI for privacy set with "Emergency" release indicator escutcheon. Red for engaged, green for released – can also be used as an indicator bolt.



Sliding Indicator Bolt Set

- Suits sliding doors.
- Incorporates latch, internal turnbutton escutcheon and external emergency release escutcheon – shows red for engaged and green for released.
- Concealed fixing. 60mm backset.
- Suits a 35mm diameter hole through door face. For doors 35mm to 45mm thick.
- Not able to be recessed into cavity door pocket.



Inset shows external emergency release indicator escutcheon on reverse

Sliding indicator bolt set
99SIB CP SC

Also available:

Sliding Bolt Set (without indicator)

- Features of this product are the same as detailed for 99SIB (above), however without indicator.

Sliding indicator bolt set
99SB CP SC

When ordering, add relevant finish code to form complete catalogue number, as shown under products illustrated.

* Denotes cylinder purchased separately.



7000W Series Brass Levers/Knobs on Brass Long Plates



- A selection of lever/knobs on tapered brass long plate furniture.
- Brass backplate with brass lever or knob.
- Furniture backplate (W for wide plate) – 220mm x 50mm x 15mm.
- Various options available to suit 3000 series mortice locks and latches.
- Exterior plate with lever or knob and cylinder hole.
- Interior plate with lever or knob and cylinder hole.
- Exterior plate with lever or knob and emergency release.
- Exterior plate with lever or knob, indicator and emergency release.
- Interior plate with lever or knob and turnbutton.
- Exterior plate with lever or knob-plain.
- Interior plate with lever or knob-plain.
- Exterior plate-plain.
- Interior plate-plain.
- Can be used on fire doors.
- Polished Brass available upon request

Brass Lever/Brass Plate



Exterior Plate, Cylinder Hole & D Lever
7111W CP SC



Exterior Plate, Cylinder Hole & Form Lever
7112W CP SC



Exterior Plate, Cylinder Hole & Linear Lever
7113W CP SC



Exterior Plate, Cylinder Hole & Horizon Lever
7148W CP SC



Exterior Plate, Cylinder Hole & President Lever
7150W CP SC



Exterior Plate, Cylinder Hole & Knob
7151W CP SC



Exterior Plate, Cylinder Hole & Elliptical Knob
7152W CP SC



Exterior Plate, Cylinder Hole & Senator Lever
7165W CP SC



Exterior Plate, Cylinder Hole & Congress Lever
7168W CP SC

When ordering, add relevant finish code to form complete catalogue number, as shown under products illustrated.

7000W Series Alloy Levers on Brass Long Plates

- A selection of levers on tapered brass long plate furniture.
- Brass backplate with alloy lever.
- Furniture backplate (W for wide plate) – 220mm x 50mm x 15mm.
- Various options available to suit 3000 series mortice locks and latches.
- Exterior plate with lever and cylinder hole.
- Interior plate with lever and cylinder hole.
- Exterior plate with lever and emergency release.
- Exterior plate with lever, indicator and emergency release.
- Interior plate with lever and turnbutton.
- Exterior plate with lever – plain.
- Interior plate with lever – plain.
- Exterior plate – plain.
- Interior plate – plain.
- Can be used on fire doors.
- Polished Brass available upon request



Alloy Lever/Brass Plate



Exterior Plate, Cylinder Hole & Dias Lever*
7131WL CP SC



Exterior Plate, Cylinder Hole & Form O4 Lever
7132W CP SC



Exterior Plate, Cylinder Hole & Ergo Lever
7143W CP SC



Exterior Plate, Cylinder Hole & Radius Lever
7144W CP SC



Exterior Plate, Cylinder Hole & Crescent Lever
7145W CP SC



Exterior Plate, Cylinder Hole & Arc Lever
7146W CP SC



Exterior Plate, Cylinder Hole & Zephyr Lever*
7160WL CP SC



Exterior Plate, Cylinder Hole & Aero Lever
7161W CP SC



Exterior Plate, Cylinder Hole & Curvelle Lever*
7162WL CP SC

When ordering, add relevant finish code to form complete catalogue number, as shown under products illustrated.

* Denotes to specify Left (L) or Right-Handed (R) when ordering.

7000N Series Levers on Brass Narrow Stile Long Plates



- A selection of lever/knobs on narrow stile tapered brass long plate furniture.
- Brass backplate, brass/alloy levers.
- Furniture backplate (N for narrow plate) – 220mm x 25mm x 15mm.
- Various options available to suit 3000 series and 2000 series mortice locks and latches.
- Exterior plate with lever and cylinder hole.
- Interior plate with lever and cylinder hole.
- Exterior plate with lever and emergency release.
- Interior plate with lever and turnbutton.
- Exterior plate with lever – plain.
- Interior plate with lever – plain.
- Exterior plate – plain.
- Interior plate – plain.
- Levers shown are those that suit the 2000 series 23mm backset mortice locks. If using the 3000 series 60mm backset mortice lock, other levers are available on 7000N series furniture.
- Polished Brass available upon request

Brass Lever/Brass Plate



Exterior Plate, Cylinder Hole & D Lever
7111N CP SC



Exterior Plate, Cylinder Hole & Form Lever
7112N CP SC



Exterior Plate, Cylinder Hole & Congress Lever
7168N CP SC

Alloy Lever/Brass Plate



Exterior Plate, Cylinder Hole & Crescent Lever
7145N CP SC



Exterior Plate, Cylinder Hole & Arc Lever
7146N CP SC



Exterior Plate, Cylinder Hole & Zephyr Lever*
7160NL CP SC

When ordering, add relevant finish code to form complete catalogue number, as shown under products illustrated.
* Denotes to specify Left (L) or Right-Handed (R) when ordering.

9800 Series Levers on Narrow Stile Long Plates

- Stylish array of levers on narrow long plates (26mm wide by 221mm long with round end).
- Non-handed to suit left or right-handed doors.
- Smooth retraction of latch or lock at 45 degree turn of handle.
- Exterior sets 'E' with cylinder hole are for use with 755 series mortice locks (60mm, 50mm, 40mm, 30mm and 25mm backsets). Spindle hole to key hole centre measures 85mm which suits the 755 series mortice lock.
- Passage sets 'P' without cylinder hole are suitable for use with 480 or 960/980 series tubular latches – refer instructions in pack.
- The 9800 series is not suitable for use with 2000 or 3000 series mortice locks.



Alloy Lever/Alloy Plate



Form lever on narrow stile long plate

9832E BG CP DB SC



Inline lever on narrow stile long plate

9842E BG/SG CP/SC DB/SD SC/CP



Ergo lever on narrow stile long plate

9843E BG CP DB SC



Crescent lever on narrow stile long plate

9845E CP SC



Arc lever on narrow stile long plate

9846E CP SC



Zephyr lever on narrow stile long plate

9860E CP SC



Aero lever on narrow stile long plate

9861P CP SC (passage shown)



Linear lever on narrow stile long plate

9813E CP SC

Brass Lever/Alloy Plate



When ordering, add relevant finish code to form complete catalogue number, as shown under products illustrated. Catalogue number refers to a complete set of 2 assemblies.

9700 Series Brass Levers on Long Plates



- Stylish array of levers on long plates (40mm wide by 235mm long with round end).
- Non-handed to suit left or right-handed doors.
- Smooth retraction of latch or lock at 45 degree turn of handle.
- Exterior sets 'E' with cylinder hole are for use with 755 series mortice locks (60mm, 50mm and 40mm backsets). Spindle hole to key hole centre measures 85mm which suits the 755 series mortice lock.
- Exterior sets require a 23mm diameter spindle hole, two 9.5mm diameter holes top and bottom (195mm centre to centre) and cylinder hole/cut-out through door face.
- Passage sets 'P' without cylinder hole are for use with 480 or 960/980 series tubular latches.
- Passage sets suit a 35mm diameter spindle hole through door face and two 9.5mm diameter holes top and bottom (195mm centre to centre).
- The 9700 series is not suitable for use with 2000 or 3000 series mortice locks.

Brass Lever/Alloy Plate



Linear lever on long plate
9713E CP SC



Horizon lever on long plate
9748E CP SC



President lever on long plate
9750E CP SC



Senator lever on long plate
9765E CP SC

When ordering, add relevant finish code to form complete catalogue number, as shown under products illustrated. Catalogue number refers to a complete set of 2 assemblies.

9700 Series Alloy Levers on Long Plates

- Stylish array of levers on long plates (40mm wide by 235mm long with round end).
- Non-handed to suit left or right-handed doors.
- Smooth retraction of latch or lock at 45 degree turn of handle.
- Exterior sets 'E' with cylinder hole are for use with 755 series mortice locks (60mm, 50mm and 40mm backsets). Spindle hole to key hole centre measures 85mm which suits the 755 series mortice lock.
- Exterior sets require a 23mm diameter spindle hole, two 9.5mm diameter holes top and bottom (195mm centre to centre) and cylinder hole/cut-out through door face.
- Passage sets 'P' without cylinder hole are for use with 480 or 960/980 series tubular latches.
- Passage sets suit a 35mm diameter spindle hole through door face and two 9.5mm diameter holes top and bottom (195mm centre to centre).
- The 9700 series is not suitable for use with 2000 or 3000 series mortice locks.



Alloy Lever/Alloy Plate



Dias lever on long plate
9731E BG CP DB SC



Form lever on long plate
9732E BG CP DB SC



Inline lever on long plate
9742E BG/SG CP/SC DB/SD SC/CP



Ergo lever on long plate
9743E BG CP DB SC



Radius lever on long plate
9744E BG CP DB SC



Crescent lever on long plate
9745E CP SC



Arc lever on long plate
9746E CP SC



Zephyr lever on long plate
9760E CP SC



Aero lever on long plate
9761E CP SC



Curvelle lever on long plate
9762P CP SC
(passage shown)

When ordering, add relevant finish code to form complete catalogue number, as shown under products illustrated. Catalogue number refers to a complete set of 2 assemblies.



480 and 960/980 Series Dual Sprung Tubular Latches



- Gainsborough tubular latches feature a heavy duty main spring for firm action and positive return during normal operation.
- Secondary latchbolt spring for easy door closure.
- Choose from delrin or steel hubs.
- 'D' or universal 'T' strikes available – refer specific catalogue number.
- Requires a 35mm diameter hole through door face and a 25mm diameter hole through door edge.



Rectangular face and strike

60mm backset

480 BC FB PB SC

70mm backset

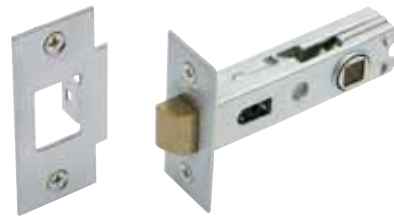
481 BC FB PB SC



Rectangular face and universal strike

60mm backset

480T BC PB SC



Rectangular face and universal strike features sintered steel cam

60mm backset, Heavy duty

980 CP PB* SC

70mm backset

981 CP SC



Radius corner face and strike

60mm backset

488 BC PB SC

ES1000 Electric Strike



Applicable to Electric Strikes only; not applicable to 480 and 960/980 Series Dual Sprung Tubular Latches.

- The ES1000 Electric Strikes are designed for use with deadlatching mortice locks having up to 12mm throw latchbolt.
- The ES1000 Electric Strikes are available in un-monitored and monitored 12 volt or 24 volt DC for use on aluminium or timber frames.
- Power to lock (fail safe) or power to open (fail secure), can be changed on site by simply changing position of a screw.



Electric strike

ES1000/12 SS

ES1000/12M SS (Monitored)

ES1000/24 SS

ES1000/24M SS (Monitored)

When ordering, add relevant finish code to form complete catalogue number, as shown under products illustrated.

* For this finish, order 960PB until stock depleted. On depletion, the 980PB will become available.

- This series features deadbolts for external doors; and sliding door locks for external sliding doors.*
- Various functions are available in each of the series shown.
- Choose from Chrome Plate, Satin Chrome or Polished Brass.
- 60mm backset.



1700 Series
Deadbolt for external
doors (deadbolt)



1800 Series
Sliding door lock for external
sliding doors (deadbolt)



When ordering, add relevant finish code to form complete catalogue number, as shown under products illustrated.

** Depending on function selected, cylinder may or may not be supplied.*

3000 Series Mortice Locks



- Choose the 3000 series Mortice locks to combine with your selected Architectural door hardware.*
- Fire-rated for up to 4 hour fire doors.
- Various functions are available in each of the series shown.
- Choose from Stainless Steel, Polished Stainless Steel or Polished Brass finishes.
- Can be used with the Gainsborough range of pull handles – 9613PH, 9648PH and 9963PH.
- 60mm backset.
- Cylinder below lever/knob.



3400 Series
Vestibule lock
(deadlatching)
Handle/knob locked
on one side only by key/
turnbutton



3500 Series
Combination lock
(deadlatching)
Handle/knob locked both sides
by key/turnbutton



3600 Series
Passage latch only



3900 Series
Nightlatch
(deadlatching)
Key or snib
retraction of latchbolt
No handle/knob furniture

* Depending on function selected, cylinder may or may not be supplied.

- 2000, 2100 and 2200 series deadlocks to suit narrow stile hinged, pivot and sliding doors.*
- 2400, 2500 and 2600 series vestibule, combination and passage deadlatches and latches.*
- All have 23mm backsets to suit narrow stile aluminium doors – commercial grade.
- Various functions available.
- The 2400, 2500 and 2600 can be supplied with matching 7000N narrow stile furniture.

2000 Series Narrow Stile Mortice Locks, Deadlocking



2000 Series Cylinder Mortice Deadlock Short Throw

- Featuring a pivoting deadbolt action, this narrow stile deadlock is designed for hinged and a selection of sliding door applications.
- The deadlock has a 22mm deadbolt projection and a positive deadlocking action.



2100 Series Cylinder Mortice Deadlock Long Throw

- Featuring a pivoting deadbolt action, this narrow stile deadlock is designed for hinged and a selection of sliding door applications.
- The deadlock has a 36mm deadbolt projection and a positive deadlocking action.



2200 Series Cylinder Mortice Sliding Door Deadlock

- Narrow stile sliding door deadlock with a vee-cut deadbolt for positive engagement in strike when locked.
- The deadlock has a 29mm deadbolt projection.

2400-2600 Series Narrow Stile Mortice Locks, Deadlatching



2400 Series Cylinder Mortice Vestibule Lock

- Suits narrow stile aluminium doors – commercial quality.
- Functions of vestibule with cylinders or turnbuttons.
- Inside handle always free for exit.
- Deadlatched upon closing of door.
- Can be used with electric strikes.



2500 Series Cylinder Mortice Combination Locking Latch

- Suits narrow stile aluminium doors – commercial quality.
- Handles operated both sides by a series of cylinders or turnbuttons.
- Handles locked both sides.
- Deadlatched upon closing of door.
- Can be used with electric strikes.



2600 Series Cylinder Mortice Passage Latch

- Suits narrow stile aluminium doors – commercial quality.
- Passage latch function.
- Handles either side retract latch.



The 2400-2600 series is available in polished stainless steel and stainless steel finishes.
 * Depending on function selected, cylinder may or may not be supplied.





655 Series Mortice lock

For use in conjunction with 9400 series stainless steel leversets on 55mm round rosettes or 9600 series leversets on 55mm round rosettes.

Includes spring-latch and a 14mm deadbolt for added security.

Offers compact design and durable construction. Available in either 57mm or 45mm backsets.



655 Mortice Lock Double Cylinder 57mm backset

655 ** 57 PB SS
(Specify 658 for Single Cylinder version)

45mm backset
655 ** 45 PB SS
(Specify 658 for Single Cylinder version)

** Insert finish code here when ordering.

755 Series Mortice Lock

Features a spring-latch and double throw 20mm deadbolt for added security.*

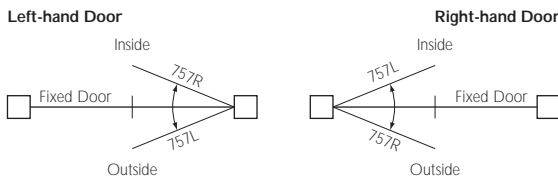
Choose from 25mm, 30mm, 40mm, 50mm and 60mm backsets.

Note: 25mm and 30mm backset versions feature single throw 14mm deadbolt.

757 Rebate Kit

For use in conjunction with a 755 series mortice lock on a rebated double door. Specify left or right-handed using the handing information diagram shown below.

Handing Information for 757 Rebate Kit.



760 Series Sliding Door Mortice Lock

60mm backset with a butterfly claw action deadbolt.

760 RK Rebate Kit

For use in conjunction with a 760 series mortice lock on a rebated double door. Non-handed to suit left or right-handed doors. The 760 RK suits a minimum door thickness of 40mm.



755 Mortice Lock Double Cylinder

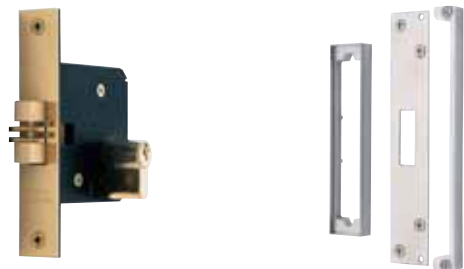
PB SC
(Specify 758 for Single Cylinder version)

Extended strike plate to suit pivot doors is available separately – PT755/SPEI SSS

757 Rebate Kit to suit 755 Series Mortice Lock

757 ** R Right-handed
757 ** L Left-handed
PB SC

** Insert finish code here when ordering.



760 Sliding Door Mortice Lock Double Cylinder

PB SC
(Specify 768 for Single Cylinder version)

760 RK Rebate Kit to suit 760 Series Sliding Door Mortice Lock

760 RK PB SC

775 Series Roller Bolt Mortice Lock

Ideal for use with pull handles on exterior doors. Available in either 60mm backset or 45mm backset. Features a roller bolt and double throw 19mm deadbolt for added security.



775 Roller Bolt Mortice Lock
Double Cylinder 60mm backset

775 SC 60
775 SC 45

Extended strike plates to suit pivot doors are available separately –
PT775/SPEIL SSS Left-handed
PT775/SPEIR SSS Right-handed

777 RK Rebate Kit

The 777 RK rebate kit can be used in conjunction with the 775 series roller bolt mortice lock for rebated double doors. Features non-handed design for left or right-handed doors.



777 RK Rebate Kit to suit
Roller Bolt Mortice Lock
777 RK SC

4000 Series Knob Locksets

4000 Series Key in Knob Locksets

- Heavy duty cylindrical lockset.
- Stylish spherical knob design.
- Concealed fixing.
- Functions include: Entrance/Escape sets, Glass Door sets, Passage sets, Privacy sets, Patio sets, Classroom sets, Storeroom Escape sets, Communication sets, Exterior Escape sets, Exterior Escape half sets, Double Cylinder Gate sets and Dummy trims.
- Backsets: 60mm, 70mm and 127mm.
- Suits doors 35mm-45mm thick and requires a 54mm diameter drill hole through door face.
- Fire-rated to Australian Standard AS 1905.1.2005.



Key in knob lockset
4000 SS



Applicable to 4000 Series Key in Knob Locksets only; not applicable to 775 Series Roller Bolt Mortice Lock.





4200 Series Key in Lever Locksets

- The 4200 series key in lever locksets offer a range of competitively priced tubular leversets on large (75mm diameter) round rosettes.
- Suitable for light commercial applications, these leversets suit doors 35mm to 45mm thick and require a 54mm diameter drill hole through door face.
- Featuring satin chrome finish, the 4200 series is available in entrance, privacy, passage, storeroom and classroom functions.
- Products feature concealed fixing and are available with an adjustable 60/70mm backset.
- All backsets are fire-rated to Australian Standard AS1905.1.2005



Key in lever lockset
4200 SC



4500/4600 Series Key in Lever Locksets

- The 4500 and 4600 series key in lever locksets feature two contemporary lever designs on large diameter round rosettes and suit doors 35mm-45mm thick. Requires a 54mm diameter drill hole through door face.
- A range of functions are available: Entrance sets, Glass Door sets, Passage sets, Privacy sets, Patio sets, Classroom sets, Storeroom Escape sets, Communication sets, Exterior Escape sets, Exterior Escape Half sets and Dummy trims.
- All products feature concealed fixing, offer 60mm, 70mm and 127mm backsets.
- 4500/4600 series: All backsets are fire-rated to Australian Standard AS 1905.1.2005.



Key in lever lockset
4500 SC



Key in lever lockset
4600 CP PB SC

When ordering, add relevant finish code to form complete catalogue number, as shown under products illustrated.

3000 Series Hydraulic Door Closers

- Range of surface mounted hydraulic door closers.
- Suitable for interior and exterior timber or metal door installations.
- Adjustable arm and bracket, backcheck, independent latching and closing speed adjustment valves.
- Parallel arm bracket is supplied as standard.
- Slide arm version and optional cover plates are available to complement the 3063, 3101 and 3205 series door closers.
- 3003ABC, 3063, 3101 and 3205 series have adjustable backcheck valve as standard.
- 3063, 3101 and 3205 series feature delayed action (DA) as standard.
- 3003ABC, 3063, 3101 and 3205 series all offer hold open version.
- Approved on fire door assemblies in accordance with Australian Standard AS 1905.1.2005 – Fire Resistant Doorsets.
- The 3000 series caters for the majority of door requirements:
 - 3003ABC suits 25kg-65kg doors.
 - 3063 suits 40kg-65kg doors.
 - 3101 suits 25kg-75kg doors.
 - 3205 suits 40kg-120kg doors.



Hydraulic door closer
3003 ABC



Slimline hydraulic door closer
without cover plate
3063



Slimline hydraulic door closer
with cover plate
3063 PS SS



Hydraulic door closer
without cover plate
3101



Hydraulic door closer
with cover plate
3101 PS SS



Hydraulic door closer
with slide arm function
3101SR PS SS
Also available in 3063 and 3205
series, specify as follows:
3063SR PS SS*
or
3205SR* PS SS*



Hydraulic door closer
without cover plate
3205



Hydraulic door closer
with cover plate
3205 PS SS

When ordering, add relevant finish code to form complete catalogue number, as shown under products illustrated.

* Note: Slide arm channel & arm are silver finish only.





Exidor's range of non-handed exit devices offer the ultimate in style and security. The full Exidor range includes Panic Bar, Panic Latch, Push Pad Panic Latch and Touchbar units together with accessories for various types of door frames. Pullman catches are optional on all models. The Exidor range is borne from extensive testing and research and development to ensure speedy exit and maximum security against intrusion. Tested on fire door assemblies, as specified in the Australian Standard AS1905.1.2005 Part 1 Fire Doors.

200 and 300 Series: Traditional Push Bar

- Anti-thrust mechanism to prevent against attack
- Ideal for fire doors
- Size: Suitable for doors up to 1220mm wide and 2440mm high. Larger door sizes catered for.



400 Series: Touch Bar

- Single, 2 or 3 point touch bar unit available.
- Patented lip to prevent jamming
- Dogging device
- Anti-thrust mechanism to prevent against attack (single or three point units)
- Ideal for fire doors
- Sizes: 2 standard sizes available. Suitable for doors 692 - 900mm wide or 872 - 1200mm wide. Suitable for doors up to 2420mm high.



500 Series: Narrow Style Push Bar

- Suitable for Aluminium doors
- Size: Suitable for use on doors up to 1220mm wide and up to 2440mm high.
- Aluminium Fixing and Timber Fixing kits both available.



For all Exidor products the standard colour is silver. Other colours are available, as shown. A premium may apply for other colours.

Fire Latching Bolt



4500/DL00SCF

Deadlatching 70mm latchbolt for use with a pair of fire doors where door is required to latch to frame. Deadlatch assembly, turnbolt with spindle, strike plate and stainless steel fixing screws.

Please refer to hard catalogue for details on hold open, delayed action types and finishes available.

Brass Padlocks

- Designed to fully complement other architectural products.
- Extensive range in a variety of sizes and finishes.

400 Series Brass Padlocks

- 45mm and 50mm padlocks.
- Shackle or key locking types.
- Brass and steel materials.
- 6 pin cylinder security.
- Hardened steel or brass shackles are available in 19mm, 38mm, 48mm and 90mm sizes.



45mm Brass Padlock

445 Series (45mm)

Brass padlocks, latching action. Shackle locking type (key can be removed when unlocked)

450 Series (50mm)

Brass padlocks, deadlock action. Key locking type (key cannot be removed in unlocked position)

Hinges

- Quality architectural hinges to suit commercial and upper residential building requirements.

Broad Butt Hinges

Available in sizes:

100 x 75 x 2.5mm and
100 x 100 x 2.5mm



Stainless steel flat capped 2.5 broad butt hinge, loose pin

GA1075FCLSS

(Fixed pin also available)

Other products available in above sizes:

- Stainless steel flat capped bearing hinge, fixed pin only
- Satin chrome and Chrome plated steel flat capped, loose pin or fixed pin
- Satin chrome plated steel flat capped bearing hinge, fixed pin only
- Extruded brass, polished brass finish, loose pin or fixed pin (Also available in 100 x 75 x 2.0mm)

Broad butt hinge in size 100 x 75 x 1.5mm:

- Stainless steel and polished stainless steel medium duty, loose pin or fixed pin



Stainless steel flat capped 2.5 bearing quick fix hinge, fixed pin

GA1070BBQFSS

(Suits aluminium door fixing) 100 x 70 x 2.5mm



Stainless steel flat capped 2.0 lift-off hinge

GA1075FCLOSSL (left-handed)

100 x 75 x 2.0mm

GA1075FCLOSSR (right-handed)



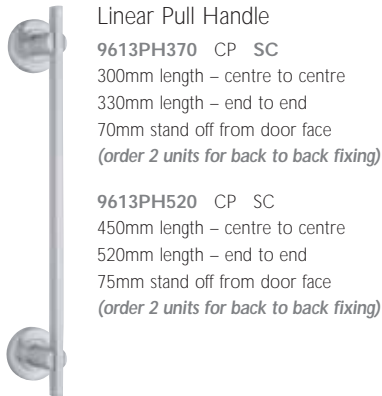
Applicable to Fire Latching Bolt only; not applicable to Brass Padlocks or Hinges.



Auxiliary Hardware

Pull Handles

- Choose from a range of pull handles in various lengths and styles.



Linear Pull Handle
9613PH370 CP SC
 300mm length – centre to centre
 330mm length – end to end
 70mm stand off from door face
(order 2 units for back to back fixing)

9613PH520 CP SC
 450mm length – centre to centre
 520mm length – end to end
 75mm stand off from door face
(order 2 units for back to back fixing)



Horizon Pull Handle
9648PH370 CP SC
 300mm length – centre to centre
 370mm length – end to end
 55mm stand off from door face
(order 2 units for back to back fixing)

9648PH520 CP SC
 450mm length – centre to centre
 520mm length – end to end
 60mm stand off from door face
(order 2 units for back to back fixing)



Senator Pull Handle
9963PH370 CP SC
 300mm length – centre to centre
 370mm length – end to end
 55mm stand off from door face
(order 2 units for back to back fixing)



Applicable when used in conjunction with 3000 series mortice lock.

Pull Handle Sets

- Shown below are examples of Linear, Horizon and Senator pull handles combined with matching leverset, 755 series mortice lock and key escutcheons to suit exterior door applications.

*Door is opened from exterior by retracting latchbolt with key; or from interior by retracting latchbolt with lever. Operate key to throw deadbolt.
 (Part numbers for pull handle sets are detailed below.)*



Linear Pull Handle Set
9613PHSET370 CP SC
 Contents:
9613PH370 CP SC
 Linear 330mm Pull Handle
9613 CP SC
 Linear Leverset on 55mm round rosettes (inside door)
755SC60
 Mortice Lock
10EU4 CP SC
 Key Escutcheons (2)



Horizon Pull Handle Set
9648PHSET370 CP SC
 Contents:
9648PH370 CP SC
 Horizon 370mm Pull Handle
9648 CP SC
 Horizon Leverset on 55mm round rosettes (inside of door)
755SC60
 Mortice Lock
10EU4 CP SC
 Key Escutcheons (2)



Senator Pull Handle Set
9963PHSET370 CP SC
 Contents:
9963PH370 CP SC
 Senator 370mm Pull Handle
9965 CP SC
 Senator Leverset on 58mm square backplates (inside of door)
755SC60
 Mortice Lock
10EU5 CP SC
 Key Escutcheons (2)

Back to Back Pull Handle Set

- The Horizon pull handle design is also available as a back to back pull handle set with roller bolt mortice lock and accessories.
- The Horizon pull handle set features two 370mm length Horizon pull handles, roller bolt mortice lock, two key escutcheons and accessories. Please refer to detail below:



Horizon Pull Handle Set – back to back

9648BBSET370 CP SC
 Contents:
9648PH370 CP SC Horizon 370mm Pull Handles (2)
775SC60 Roller Bolt Mortice Lock (with standard left and right-handed strike plates)
10EU4 CP SC Key Escutcheons (2)
PT775/SPEIL SSS Extended Strike Plate – left-handed (for pivot door)
PT775/SPEIR SSS Extended Strike Plate – right-handed (for pivot door)

600mm Pull Handles

- Gainsborough now offers an even broader range of pull handles, with the introduction of the 9200 series 600mm Grade 316 Stainless Steel Pull Handles.
- Choose from an impressive array of handles, including the Horizon, Curved, Styled, and Oblong designs, all 600mm in length.
- Featuring 316 grade stainless steel for higher corrosion resistance and durability, each product comprises a single pull handle with all the relevant screws and accessories for single fix-visible; or single fix-concealed; or back to back fixing. Note: For back to back fixing, please order 2 handles.



Note: 9290PHB600 SS excluded from guarantee



600mm Styled Pull Handle, left-handed

9281PHL600 SS
Includes screws for single fix – visible; single fix – concealed; or back to back fixing*
(order 2 units for back to back fixing – 1 left-handed, 1 right-handed)
450mm length – centre to centre
600mm length – end to end
25mm diameter
70mm stand off from door face



600mm Styled Pull Handle, right-handed

9281PHR600 SS
Includes screws for single fix – visible; single fix – concealed; or back to back fixing*
(order 2 units for back to back fixing – 1 left-handed, 1 right-handed)
450mm length – centre to centre
600mm length – end to end
25mm diameter
70mm stand off from door face



600mm Horizon Pull Handle

9248PH600 SS
Includes screws for single fix – visible; single fix – concealed; or back to back fixing*
(order 2 units for back to back fixing)
450mm length – centre to centre
600mm length – end to end
25mm diameter
70mm stand off from door face



600mm Oblong Pull Handle

9266PH600 SS
Includes screws for single fix – visible; single fix – concealed; or back to back fixing*
(order 2 units for back to back fixing)
580mm length – centre to centre
600mm length – end to end
40mm wide; 20mm deep.
65mm stand off from door face



600mm Curved Pull Handle

9282PH600 SS
Includes screws for single fix – visible; single fix – concealed; or back to back fixing*
(order 2 units for back to back fixing)
300mm length – centre to centre
600mm length – end to end
25mm diameter
90mm stand off from door face



* Note: Consult your Gainsborough Hardware customer service team for further information on fixing methods referred to above.

Auxiliary Hardware



600mm Offset Pull Handle (Grade 304)

– Back to Back Fix only (2 handles per pack)

- The Gainsborough Offset pull handle features a handle design which is angled away from its fixing points (and door edge) to facilitate easier access to a mortice or auxiliary lock installed near the handle. The design is also ideal for narrow stile doors or where there is a preference for the handle to be angled further away from the door edge for easier accessibility.



600mm Offset Pull Handle – back to back fix only

9290PHBB600 SS

400mm length – centre to centre
600mm length – end to end
32mm diameter
60mm stand off from door face

Note: 9290PHBB600 SS is excluded from 5/10 guarantee.

750mm Pull Handles

- Gainsborough now offers a selection of 750mm stainless steel pull handle options to meet the needs of today's residential and commercial building requirements.
- Choose from the 750mm length Horizon pull handle (in 25mm or 32mm diameter); or the 750mm length Square and Oblong pull handle designs.
- Single or back to back fixing options are available – please refer to detail shown below by product.



750mm Horizon Pull Handle (25mm diameter)

9248PHSF750 SS

Single fix – visible*

9248PHSFC750 SS

Single fix – concealed*

9248PHBB750 SS

Back to back*

540mm length – centre to centre

750mm length – end to end

25mm diameter

65mm stand off from door face



750mm Horizon Pull Handle (32mm diameter)

9248PSFC750/32 SS

Single fix – concealed*

9248PBB750/32 SS

Back to back*

600mm length – centre to centre

750mm length – end to end

32mm diameter

83mm stand off from door face



750mm Square Pull Handle

9265PHSFC750 SS

Single fix – concealed*

9265PHBB750 SS

Back to back*

719mm length – centre to centre

750mm length – end to end

32mm wide; 32mm deep

65mm stand off from door face



750mm Oblong Pull Handle

9266PHSFC750 SS

Single fix – concealed*

9266PHBB750 SS

Back to back*

729mm length – centre to centre

750mm length – end to end

40mm wide; 20mm deep

65mm stand off from door face

* Note: Consult your Gainsborough Hardware customer service team for further information on fixing methods referred to above.

750mm Pull Handle Set

- The Gainsborough 750mm Horizon pull handle set includes the 750mm Horizon back to back pull handles complete with roller bolt mortice lock, key escutcheons and left and right-handed extended strike plates. The extended strike plates are included as an accessory for pivot door applications. (Standard left and right-handed strike plates are also included with the 775 roller bolt).
- Suits 35mm-50mm thick doors.
- Double or single acting function.
- Concealed fix – back to back.
- Roller bolt holds door closed but not locked.
- Lock or unlock deadbolt with key from inside or outside.



9248BBSET750 SS**

Contents:

9248PHBB750	SS	750mm Horizon Pull Handles (2) – back to back
775SC60		Roller Bolt Mortice Lock with standard left or right-handed strike plates
10EU4	SS	Key Escutcheons (2)
PT775/SPE1L	SSS	Extended Strike Plate – left-handed
PT775/SPE1R	SSS	Extended Strike Plate – right-handed

** 750mm Horizon pull handle set is available in Stainless Steel only, however the 775SC60 Roller Bolt mortice lock is finished in Satin Chrome, as listed above.

1800mm Pull Handles



1800mm Horizon Pull Handle
Stainless Steel (32mm diameter)

9248PBB1800/32 SS

- Back to back fix
- 1600mm length – centre to centre
- 1800mm length – end to end
- 32mm diameter
- 83mm stand off from door face
- Suits 35-42mm thick doors
- Not recommended for use with door closers



1800mm Oblong Pull Handle
Stainless Steel

9266PHBB1800 SS

- Back to back fix
- 1749mm length – centre to centre
- 1770mm actual length – end to end
- 40mm wide, 20mm deep
- 61mm stand off from door face
- Suits 35-45mm thick doors



Auxiliary Hardware



D-Pull Handles



D-Pull handle
6401 PS SS 100 x 10mm
(other sizes available in PS and SS)



D-Pull back
to back handle
6413 SS
150 x 16mm



Visible fix rose
6400VF PS SS 50 x 2mm
Suits D-Pull handles 6403-6406



Pull handle on
plate, visible fix with
countersunk holes
6420/02 SS
Plate size:
250 x 65 x 1.8mm
Handle size:
150 x 12mm
(other sizes available)

Push Plates



Push plate, visible fix,
with countersunk holes
6420 SS
Plate size:
250 x 65 x 1.8mm
(other sizes available)



Push plate, concealed
fix with stainless
steel studs
6455 SS
Plate size:
300 x 100 x 1.8mm
(other sizes available)

Indicator Bolts/Sets



Surface mounted indicator bolt with staple, turn and emergency access from outside. Indicator 'Engaged' or 'Vacant'.

6100 SC Indicator Bolt



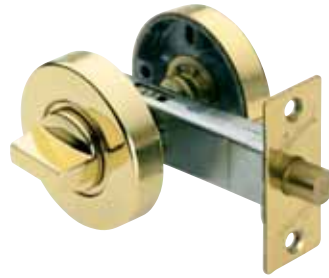
Surface mounted indicator bolt with staple, turn and emergency access from outside. Features safety release turn external. Indicator 'Engaged' or 'Vacant'.

6101 SC Indicator Bolt with safety release turn external



Surface mounted indicator bolt with door bumper staple, hold open spring hinges, door hat and coat hook and fixing bolts and nuts. Indicator 'Engaged' or 'Vacant'.

6100HOI SC Indicator Set



Inset shows external emergency release indicator escutcheon on reverse



55mm diameter round rosettes to complement the 9600 series. Includes privacy bolt, internal turnbutton escutcheon and external emergency release indicator escutcheon – shows red for engaged and green for released. Suits doors 35mm to 45mm thick. 60mm backset.

96PSI BG CP DB SC Mortise Indicator Set



Inset shows external emergency release indicator escutcheon on reverse

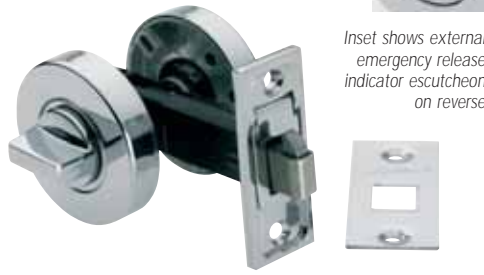


Square backplates to complement the 9900 series. Includes privacy bolt, internal turnbutton escutcheon and external emergency release indicator escutcheon – shows red for engaged and green for released. Suits doors 35mm to 45mm thick. 60mm backset.

99PSI CP SC Mortise Indicator Set



Indicator Bolts/Sets



Inset shows external emergency release indicator escutcheon on reverse

Suits sliding doors – not cavity type. 55mm diameter round rosettes to complement the 9600 series. Includes latch, internal turnbutton escutcheon and external emergency release indicator escutcheon – shows red for engaged and green for released. Suits doors 35mm to 45mm thick. 60mm backset.

96SIB CP SC Sliding Indicator Bolt Set



Inset shows external emergency release indicator escutcheon on reverse

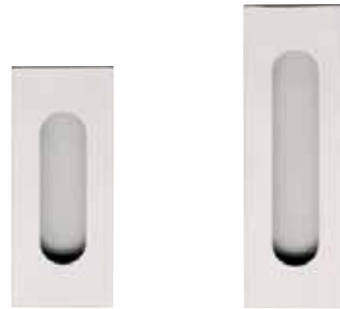
Suits sliding doors – not cavity type. Square backplates to complement the 9900 series. Includes latch, internal turnbutton escutcheon and external emergency release indicator escutcheon – shows red for engaged and green for released. Suits doors 35mm to 45mm thick. 60mm backset.

99SIB CP SC Sliding Indicator Bolt Set

96FP and 99FP Series

Stainless Steel Flush Pulls (304 Grade)

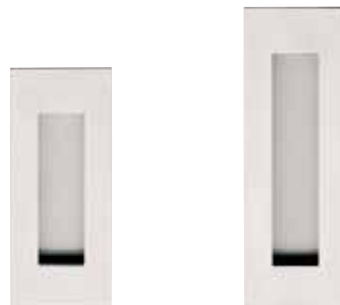
- Gainsborough offers a range of 304 grade stainless steel flush pulls to complement the 9400 or the 9200 series stainless steel door furniture.
- Choose from a rectangular design featuring the finger pull recess with rounded ends (96FP); or a rectangular design which offers the recess with square ends (99FP).
- Each design is available in 120mm or 150mm lengths.
- All flush pulls feature concealed fixing with screw holes located within the cut-out of the flush pull – at top and bottom. Round head screws are also featured for convenience.



Rectangular Flush Pulls with Rounded Ends

96FP120 SS
120mm x 50mm x 13mm

96FP150 SS
150mm x 50mm x 13mm



Rectangular Flush Pulls with Rectangular Ends

99FP120 SS
120mm x 50mm x 13mm

99FP150 SS
150mm x 50mm x 13mm

Flush Bolts, Barrel Bolts and Skeleton Bolts



Flush bolt
6051 CP PB SC
150 x 19mm with 25mm
projection
(other sizes available)



Panic skeleton bolt,
visible fix
6020 SC 250mm
(other sizes and offset
concealed fix also available)



Barrel bolt
6002 CP PB SC 100 x 10mm with 25mm projection
(other sizes available)



Necked barrel bolt
6010 SC 150 x 10mm with 25mm projection



Panic skeleton bolt,
concealed fix
6040 SC 250mm
(other sizes available)



Floor plate
to suit 25mm
throw barrel bolts
6000FP SC



Reverse barrel bolt
6009 CP PB SC 150 x 32mm x 9mm with
25mm projection



Hat and Coat Hook



Hat and coat hook
6208 CP SC 80mm projection



Auxiliary Hardware



Floor Stops



Elite floor stop
6201 CP PB SC
50mm diameter, 44mm high



2-50 floor stop
6202 CP PB SC
54 x 75mm, 35mm high



New Stop
6205 CP PB SC
45mm diameter, 23mm high



New Stop with
12mm rise
6206 CP PB SC
45mm diameter, 35mm high



20mm spacer to suit 6205 or 6206 floor stop
6205SP CP SC
(Spacer increases height of floor stop by 20mm).



Round magnetic catch floor stop
6210NA

Wall Stops



Wall stop with rubber buffer
6204 CP SC 93mm length



Wall stop with rubber buffer
6203 CP PB SC 75mm length



Wall stop with rubber buffer
6207 CP PB SC 75mm length. Tube: 19mm diameter

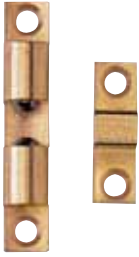


Extendable wall & floor stop – magnetic
6209 CP SC 75 to 92mm length, 38mm diameter



Wall stop – square with rubber buffer
6211 CP SC 80mm length
Shown here as wall stop, special design also allows installation vertically as floor stop

Brass Double Ball and Roller Catches



Brass double ball catches

6220 50mm Length
6221 75mm Length



Adjustable roller catch

6230 CP PB SC



Heavy duty adjustable roller catch

6231 SC

Rim Nightlatches



Rim nightlatch with cylinder and escutcheon*

6200 CP PB SC

Rim nightlatch without cylinder

6200NC

*Case Brown finish only



Rim nightlatch – fire-rated with cylinder and escutcheon

6200F CP PB SC

Rim nightlatch – fire-rated without cylinder

6200FNC



Applicable to 6200F & 6200FNC only.



Rim cylinder and escutcheon

1000/CYLR CP PB SC



Opening out strike

6200/SP01



Linear Brass Bathroom Accessories

- A range of bathroom accessories to complement the Linear design lever concept, featuring concealed fixed brass base fittings.
- Brass outer rose 30mm diameter.
- Brass inner rose 25mm diameter.
- Two (2) fixing holes (concealed).
- Rail dimensions 12mm wide x 5mm thickness.
- Towel rail: 40mm stand off from F.O.W.
- Towel rail: 45mm from rail to rail (double towel rail).
- All shelves have rounded corners.
- Corrosion resistant Gainsborough 96 hour salt spray test.*



Hat/Coat Hook
6013-1 CP SC/CP/SC



Single Towel Rail 660mm Length
6013-4 CP SC/CP/SC



Single Towel Rail 550mm Length
6013-5 CP SC/CP/SC



Double Towel Rail 660mm Length
6013-6 CP SC/CP/SC



Soap Dish with 10mm Drain Hole
6013-2 CP SC/CP/SC



Double Towel Rail 550mm Length
6013-7 CP SC/CP/SC



Double Towel Rail 450mm Length
6013-8 CP SC/CP/SC



Toilet Roll Holder
6013-9 CP SC/CP/SC



Towel Ring
6013-10 CP SC/CP/SC



Glass Shelf 250mm x 125mm x 8mm Frosted
6013-11 CP SC/CP/SC



Glass Shelf 500mm x 125mm x 8mm Frosted
6013-12 CP SC/CP/SC

F.O.W. = Face of wall

* Denotes Gainsborough Salt spray test.

FINISHES: CP Chrome Plate

SC/CP/SC = Satin Chrome Plate on rail or ring or holder or hook; Chrome Plate on rosette body portion which connects to rail or ring or holder or hook; Satin Chrome Plate on the thicker body portion closest to wall.

Cabinet Handles

A distinctive styled range of cabinet handles and knobs in satin stainless steel 304 grade. Complementing levers of the leading designs in Gainsborough's lever handles – 9100, 9300 and 9600 series.

Handles



President style

110mm L x 12mm Square x 35mm H
(100mm C-C)

6511 SS (other sizes available)

150mm L (138mm C-C) 6512

252mm L (240mm C-C) 6513



Senator style

110mm L x 20mm W x 10mm Thick
Oblong x 35mm H (100mm C-C)

6521 SS (other sizes available)

150mm L (140mm C-C) 6522

250mm L (240mm C-C) 6523



Arc style

110mm L x 10mm Dia. Bow
(100mm C-C)

6531 SS

170mm L (150mm C-C) 6532

274mm L (240mm C-C) 6533



Crescent style

110mm L x 10mm Dia. Round
Square Ends (100mm C-C)

6541 SS (other sizes available)

160mm L (150mm C-C) 6542

250mm L (240mm C-C) 6543



Horizon style

164mm L x 12mm Dia. T Handle
(100mm C-C)

6611 SS (other sizes available)

224mm L (160mm C-C) 6612

300mm L (240mm C-C) 6613

C-C (Centre To Centre Fixing)

FINISHES: **SS** Satin Stainless Steel

Knobs



Spherical style

6562 SS 25mm Diameter

6563 SS 30mm Diameter



Notched style

6572 SS 25mm Diameter

6573 SS 30mm Diameter



Oval style

6582 SS 25mm Diameter

6583 SS 30mm Diameter



Square style

6592 SS 22mm

6593 SS 25mm





Gainsborough Hardware Industries Limited A.B.N. 25 004 792 269

www.gainsboroughhardware.com.au

Head Office: 31-33 Alfred St, Blackburn, Victoria 3130
or PO Box 330, Blackburn, Victoria 3130 Australia

Telephone: (03) 9877 1555 Facsimile: (03) 9894 1599 Export Facsimile: +61 (0)3 9894 1038
E-mail: sales@gainsboroughhardware.com.au

Sales Hotline 1300 361 077 Sales Fax Hotline 1300 361 088

New South Wales	Suite 1B, 126 Taren Point Road TAREN POINT NSW 2229	Tel: (02) 9524 4855	Fax: (02) 9524 5670
South Australia	31 Lansdowne Terrace VALE PARK SA 5081	Tel: <i>Melb</i> (03) 9877 1555	Fax: <i>Melb</i> (03) 9894 1599
Tasmania	PO Box 330 BLACKBURN VIC 3130	Tel: <i>Melb</i> (03) 9877 1555	Fax: <i>Melb</i> (03) 9894 1599
Queensland	433 Logan Road STONES CORNER QLD 4120	Tel: (07) 3394 8323	Fax: (07) 3847 5444
North Queensland	Tambar Pty. Ltd. Unit 1, 17 Camuglia Street MT LOUISA QLD 4814	Tel: (07) 4774 5124	Fax: (07) 4774 5292
Western Australia	12 Juna Drive MALAGA WA 6945	Tel: (08) 9209 2511	Fax: (08) 9209 2611
New Zealand	Unit 5E 269A Mt Smart Road Penrose AUCKLAND	Tel: 0064 9525 6970	Fax: 0064 9525 6982

Printed December 2008

The Gainsborough limited guarantee, shown on the pages within, applies only when properly installed and subjected to no more than fair wear and tear. This guarantee does not extend to labour costs, personal loss, death or injury or economic, consequential or property damage of any kind whatsoever.

Due to the nature of the printing process, colours may vary from those shown in this brochure.
Note: Measurements shown in this brochure are nominal only.