



Finishes

- SS** Stainless Steel
- PB** Polished Stainless Steel
- PS** Polished Brass

Latchbolt

14mm Standard latchbolt

Backsets Available

23mm.

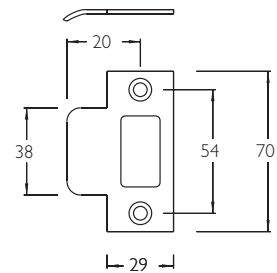
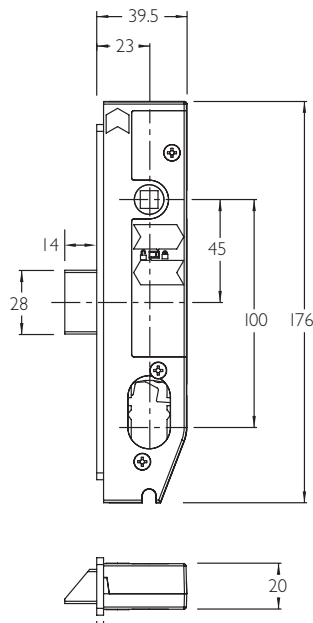
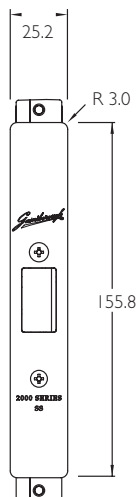
Passage latch.

No latching handle/knob.

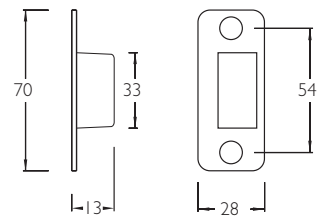
Retracts latch from either side.

No deadlatching available.

Limiting Dimensions

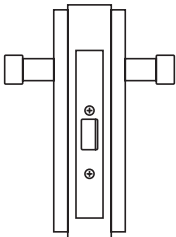


2000/SP01
32mm UNIVERSAL STRIKE



2000/SB01

2600 Series Mortice Passage Latch

PRODUCT	DESCRIPTION	CATALOGUE NO.
Passage Set 	2600 Passage Set Plain Latch. Latchbolt operated by handles both sides.	2600

Finish Codes: **PB** Polished Brass **PS** Polished Stainless Steel **SS** Stainless Steel

Note: Add finish code to above to form complete catalogue number e.g. 2600 PS