



**Finishes**

- CP** Chrome Plate
- SC** Satin Chrome Plate
- PB** Polished Brass

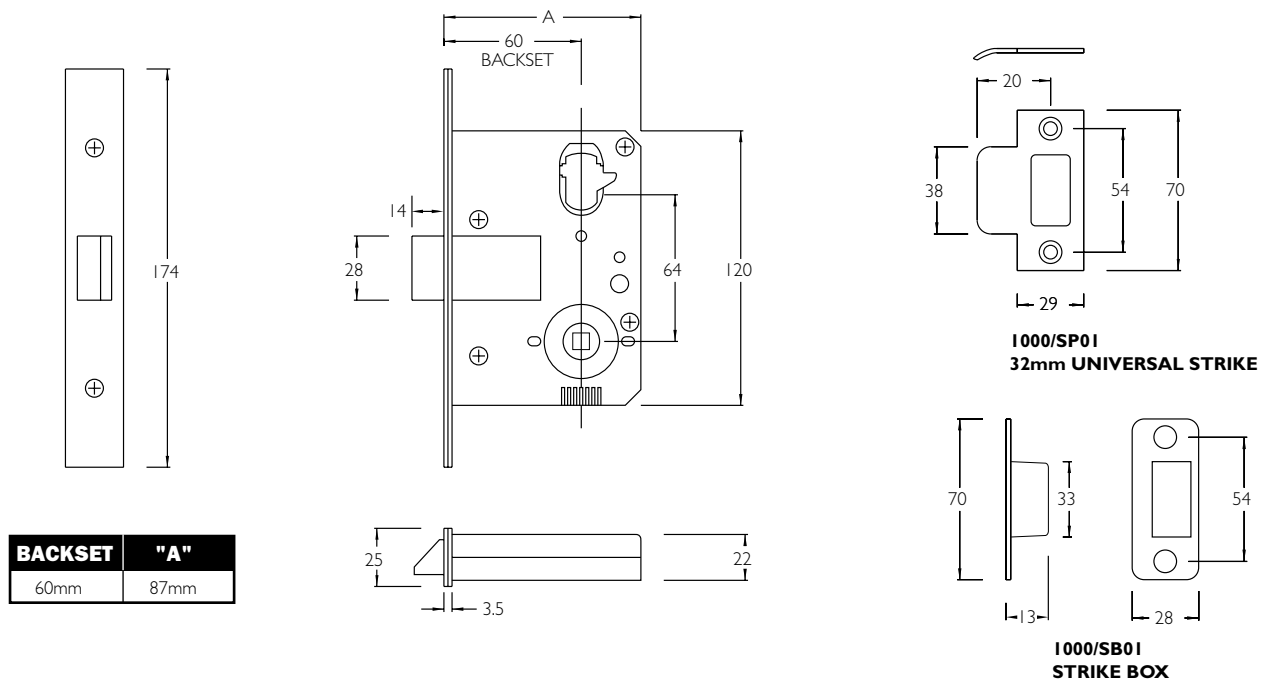
When ordering, add relevant finish code to form complete catalogue number.

**Latchbolt**

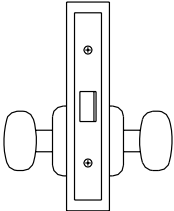
14mm Standard Latchbolt.

A passage type latch for matching the case dimensions of the range of mortice locks. Features heavy duty springs and same latching as previous latching type locks, but without deadlatching auxiliary bolt.

**Limiting Dimensions**



### 1100 Series Passage Latch

PRODUCT	DESCRIPTION	CATALOGUE NO.
<b>Passage Set</b> 	Non Locking.  Latchbolt operated by handles either side at all times.  Non handed. Non deadlatching.	<b>1100</b>

**Finish Codes:** **CP** Chrome Plate **SC** Satin Chrome Plate **PB** Polished Brass  
 Note: Add finish code to above to form complete catalogue number e.g. 1100 CP.